

**President's Message**  
**Final Touches**  
Roger Lokey

No..., St Mary's is not quite finished yet! The complete restoration plan calls for a large patio area on the north side of the building and landscaping of that patio area and areas immediately adjacent to the building. The hardscape of the patio, complete with water lines for landscape irrigation, electrical conduits for external lighting, and ADA access to the building will be constructed by the City of Rocklin. That work is estimated to be complete in early



**We need to pull a little farther**

August. RHS will landscape the entire area, build two pergolas in the patio, and provide a water feature financed thru donations over the last three years by the Rocklin Elementary School district's third graders. Landscaping is targeted for completion by September 17, 2008; our 3<sup>rd</sup> anniversary of the Great Pull!

One of two large pergolas in the patio has been sponsored by the Rocklin Spanish Club. RHS is seeking a sponsor for the remaining pergola.

Landscaping design expertise is being donated by Alex Miller from A Touch of Grass, Inc. View his work and background at [www.atochofgrass.us](http://www.atochofgrass.us). Interested RHS members are working with Alex to design the final landscaping arrangement.

Inet, a Rocklin computer company owned by RHS member Brian Badger, has taken

*(Continued on page 4)*

**The annual Legacy Dinner, The Rocklin Roundhouse Romp, is scheduled for May 14**

Kent Dazey

Come join us for a night of dinner and dancing! Rocklin's Historical Society is presenting its Roundhouse Romp as part of its Legacy Dinner series on May 14th, 2008 at the Rocklin Sunset Center . The Roundhouse Romp is a chance to dine and dance with the stars. Featuring the Fred Morgan Big Band and professional dancers, the evening looks to be one to remembered. The theme of the evening is Rocklin's Roundhouse, the cornerstone of Rocklin's early history as a railroad town. The Roundhouse was moved to Roseville 100 years ago, but its memory and excitement still lives on today. Come celebrate this historic event and kick-up your heels at the Roundhouse Romp. Call Gay Morgan at 624-2355 for tickets. Seating is limited, so order your tickets early.

**Roundhouse Romp**  
**May 14, 2008**  
**6:00 9:30 p.m.**  
**Rocklin Sunset Center**

**Saint Mary's concert attracts Rocklin's music fans**

Gary Day

Frederick Hodges and his piano artistry stunned a full house at Old Saint Mary's Chapel on March 16, 2008. Hodges' concert was a test of our ability to present first-rate music at the chapel and of our ability to draw neighbors to hear it. We succeeded on both counts. Tickets sold out early and , after the concert, half of the audience asked for early notification of our next concert.

However, because of the untenable logistics of acquiring and storing a piano in the church for future concerts we are looking for an alternative venue.

Also, if you have a grand piano that you can donate or loan for an extended period please call me at 624 -0241



Courtesy of Ronna Davis

**This concert piano fit snugly on stage at Old Saint Mary's Chapel. It dominated the scene and added formality to the concert**

# Delano's, the king of Rocklin's 19th century quarries

Revised Placer Herald article  
Gary Day

According to state records Rocklin was the principal granite producing point in the Sacramento Valley in the late 19<sup>th</sup> and early 20<sup>th</sup> centuries. Rocklin's largest and most financially-successful quarry operation of those times was Ira Delano's Rocklin Granite Company. Delano acquired the quarry for \$13,000 from the estate of Welshman quarry operator G. Griffith in 1889 and quickly benefited from the high quality and easy accessibility of the quarry's granite. The quarry could yield granite slabs for monuments that were 16 feet long, 20 feet wide and 12 inches thick. Delano's heyday came after San Francisco's April 1906 earthquake when his operations supplied curbstones, some of them 20 feet long, to line San Francisco's rebuilt streets.

Rocklin's granite industry saw a steady decline between 1910 and 1920. Engineers were perfecting the manufacture of cement based concrete during this period and an extended quarry-worker strike closed half of Rocklin's quarries permanently in 1915. Delano survived the 1915 strike but closed his quarry in 1916.

In 1957 Rocklin historian, Uno Hebuck, researched and documented the locations of 61 Rocklin quarries; many of these are still visible in Rocklin's downtown landscape. Possibly only two or three of the 61 produced granite after 1920. One closed in the late 1920s but reopened in the 1930s and survived until 2005. It was Rocklin's last surviving quarry.

Delano's quarry pit was 100 feet deep and covered an area of about one acre at the surface. The City of Rocklin bought the pit in 1941 for \$10.00 and used it as the city dump for about 20 years. Today it underpins a parking lot and motel on the south side of the intersection of Rocklin Road and Granite Drive.



**Delano's quarry workers in 1911.** The gentleman in the lower right holding the child in his lap is Sam Renaldi who succeeded George Willard as Rocklin's town marshal in 1913. Renaldi killed saloon owner Uledi Holmes in a February 18, 1914, gunfight at Blackwell and Hendrickson's Livery Stable, immediately east of the site of today's Rocklin Train Station. Renaldi died of his wounds the next day and is memorialized at the Police Officers Memorial in Sacramento as the first Rocklin police officer to die in the line of duty.

**To join the Rocklin Historical Society, call 624-2355**

## Rocklin's Roundhouse—1867 to 1908

Gary Day

In 1862, during the Civil War, the United States Congress authorized Federal incentives for construction of a rail line to connect eastern population centers with California. In January 1863 the Central Pacific Railroad started laying rails eastward from Sacramento according to plans proposed by Chief Engineer Theodore Judah. Later that year the Union Pacific Railroad started laying rails westward from a point near Omaha, Nebraska. In 1869 the tracks met at Promontory Summit Utah, marking completion of the nation's first Transcontinental Railroad.

Judah's plan in 1863 was to build a roundhouse at Junction, now Roseville, to service the extra engines that would be needed to help trains surmount the Sierra. But Judah died that year and new CP managers decided to build the roundhouse at Rocklin instead, closer to the point where the rail bed steepens as it heads toward Auburn. According to railroad historian G.

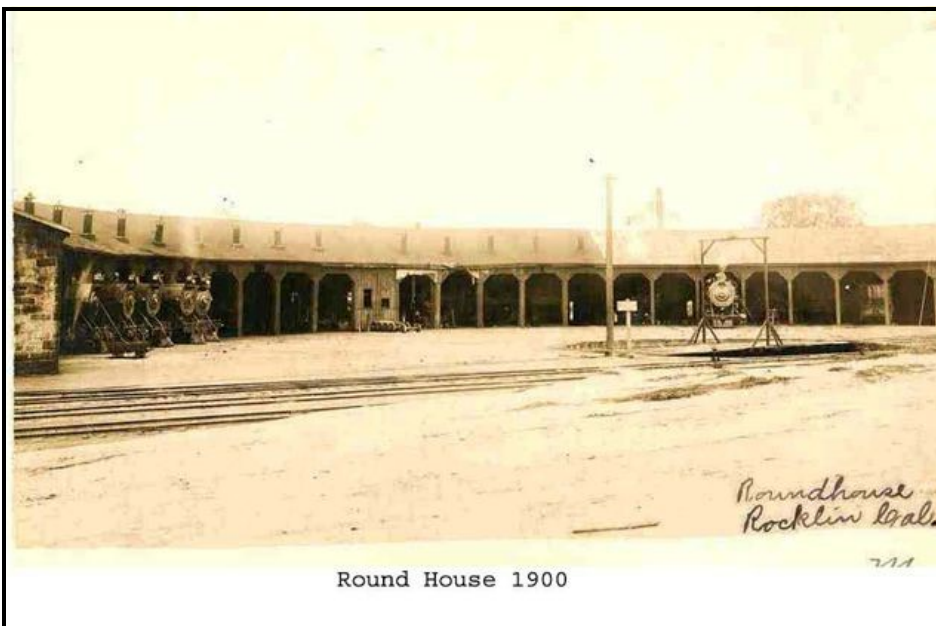
J. Chris Graves engines of the 1860s required new fuel and water at regular intervals and Rocklin was at a more appropriate distance from Sacramento for a train's first stop. The decision to build in Rocklin also reflected Rocklin's proximity to large stands of oak and pine. Each engine required 16 cords of firewood on its strain to the Sierra summit.

The Rocklin facility was located at the intersection of Front Street and Granite

(now Rocklin Road) east of today's Crossroads Church. It opened in May 1867. It included 25 engine stalls, a turntable and an 8,000 square foot woodshed.

The roundhouse's foundation and exterior walls were constructed of rock and masonry but early undated photos show significant wooden construction in the roofing and stalls.

In 1869 the woodshed burned and was quickly rebuilt.



Round House 1900

In 1873 the roundhouse burned again as its roof was being tarred. The fire destroyed ten engines and damaged several coaches but the facility continued to function without interruption.

Rocklin's roundhouse was in service continually until 1905 when railroad management announced a major expansion. Townspeople were elated and Rocklin's property values soared as news came of a new and larger roundhouse for Rocklin and

a new train station. But hopes were crushed in 1906 with news that Rocklin's roundhouse would soon be closing in favor of new facilities in Roseville. Railroad managers had decided that Rocklin's granite quarries to the east and residential development to the west limited options for expansion. Also, Rocklin's booming granite industry was driving up land values; land in Roseville was less expensive. By April 1908 the railroad had moved all roundhouse operations to Roseville and the Rocklin facility closed permanently.

In its heyday, just prior to its move to Roseville, Rocklin's roundhouse employed 300 people. The monthly payroll was \$25-30,000. A report from the time asserts that, from 1906 through 1908, Rocklin's population declined by 80% as roundhouse workers abandoned their homes or pulled them to Roseville by mule team.

By 1912 Rocklin's abandoned roundhouse had become a dangerous eyesore and Rocklin's City Council required the railroad to demolish it. The foundation, and parts of the west-facing exterior rock wall are still visible near the Crossroads Church.

## Rocklin's Roundhouse Chinatown Disappears

Gary Day

Major work on the transcontinental railroad ended by 1870 and by 1876 a few Chinese immigrant railroad construction laborers had settled in Rocklin. Some grew for-sale vegetables in the area southeast of town known as "China Garden". Many worked for the railroad.

Rocklin's Chinatown consisted of about 25 homes immediately northwest of the roundhouse.

In September 1875 the Placer County sheriff investigated a murder at the old Ryan Ranch near Loomis and accused a Rocklin Chinese gold prospector, named Ah Sam of murdering a man in a mining claim dispute. Rocklin citizens were enraged and on the following Monday they met and organized themselves to flatten Rocklin's roundhouse Chinatown and expel all Chinese from town. The Rocklin area's entire Chinese population fled. Rocklin's 1880, 1890 and 1900 censuses show not one Chinese person in Rocklin or at the nearby Whitney Ranch.

**PUT ON YOUR THINKING CAPS**  
Barbara Chapman

The Historical Organizations Committee (HOC) of Placer County is planning a weekend event that encourages the public to follow The Heritage Trail. The event will be similar to the Free Museum Day in Sacramento but will be two days since our museums are spread throughout the county. All participating museums will be clearly marked on the *Trail Guide*. This event is planned for August 9<sup>th</sup> & 10<sup>th</sup>, 2008, from 10:00 a.m. to 4:00 p.m.

Museums are encouraged to plan special activities on this weekend such as music, crafts, and food. These special activities are the responsibility of each individual museum. The Placer County Museums will promote the event through the local media, radio, and through historic organizations.

What does the Rocklin History Museum want to do? We have an opportunity to become a "destination" in Placer County for this one weekend. Visitors will become eligible for raffle prizes after visiting four museums.

Our Board will have an opportunity to support this county wide effort and will need your support. Give it some thought.

By the way, there are now only three Saturdays this quarter where decent coverage is needed – May 17 & May 31 and June 14. Thank you.

*(Continued from page 1)*

the lead in designing and implementing a website for Old St Mary's Chapel. The Rocklin History Museum website is also being updated and refreshed by Christy Barros and Todd Schofield.

St Mary's has four weddings booked so far this year and one wedding in January, 2009. We will have our first military wedding (complete with canopy of swords) on July 5. When the Bridal Patio, landscaping, and St Mary's website are complete the curb appeal and image of St Mary's will be dramatically enhanced.

On May 14, RHS is sponsoring the 3<sup>rd</sup> annual Legacy Dinner which is both a fundraiser and a community presence function. The 2008 Legacy theme, "The RoundHouse Romp" highlights Rocklin railroad history. Dinner is provided by the incomparable Randy Peters Catering, with music by the celebrated Fred Morgan Big Band! If you watch "Dancing with the Stars" you will want to attend for some exciting surprise entertainment. So come out for a great Rocklin evening of dining and dancing. Folks, it doesn't get any better than this!

The RHS has worked hard to make the restoration of St Mary's a reality. That vision will be complete on Sept 17, 2008. RHS will have created a new venue in which the community of Rocklin can enjoy activities with friends and neighbors at the beautiful (new) Old St Mary's Chapel in Heritage Park. Historic Downtown Rocklin has provided us an interesting past and we are now poised to grant it a promising future.

Roger Lokey  
President



**Rocklin  
Historical Society Board of Directors**

Roger Lokey, President  
Jean Sippola, Vice President  
Carol Powell, Secretary  
Karen Lokey, Treasurer  
Gene Johnson, Heritage Park  
Bill and Laura Woods, Museum  
Ronna Davis, Events  
Roy Ruhkala, Past President  
Christi Barros, Publicity  
Jackie Bartalucci, Membership,

Newsletter proofreading by Allan and  
Marie Stone

**Please Send Us your Email  
Address**

Christy Barros  
Publicity Chairman

If you have access to Email, please send us an Email message and we will add your Email address to the roster.

Christy Barros  
christy@inetinc.net

**Mark Your Calendar**

**April 21, General Meeting  
7:00 pm at the Rocklin Library**

**RAILROADS IN PLACER COUNTY,  
THEN AND NOW**

by Ken Yeo

Mr. Yeo is a long time railroad historian and equipment restorer.

In 1976 he restored railroad equipment for display in the newly formed California State Railroad Museum. He was then promoted to the museum's Supervisor of Restoration and Maintenance. He is dedicated to the preservation of railroad history in Placer County.

**May 14, Legacy Dinner  
6:00 pm at the Sunset Center**

A TREASURE TO BEHOLD

A photographic journal of the original line of construction of the Central Pacific Railroad.

This premiere showing of spectacular "Art" photos was taken along the 747 mile Central Pacific Railroad right-of-way between Sacramento, CA and Ogden, Utah.

The photos will be displayed at the California State Railroad Museum in Sacramento in May 2009. The photos are by professional photographer, Chen-Chih Cheng of southern California with descriptions by well-known railroad author, David Bain.

**May 19, General Meeting  
7:00 pm at the Rocklin Library**

**WHATEVER HAPPENED TO  
ROCKLIN'S DOWNTOWN?**

By Gene Johnson

Gene Johnson is Chairman of the Rocklin Historical Society, Heritage Park Committee

Mr. Johnson is a long time Rocklin resident and a historian dedicated to preserving Rocklin's history.

**Rocklin Historical Society  
Planning** - Meets every Wednesday at 7 am in Oracle's cafeteria.

**Rocklin History Museum**  
Open Wednesday, Saturday and Sunday, 1 to 4