

President's Message

Dr. Jim Carlson

My first boss in the '60's had a work hard - play hard ethic he encouraged his acolytes to follow. I especially enjoyed the latter part of his formula. I can't help but think that his philosophy prevails in our group today. In a recent week 15 of our Rocklin Historical Society members assembled at the chapel grounds in our blue jeans, cut-offs and grubbies to work. We dug, we planted, we pruned and wrestled with weeds. Coffee, cakes and camaraderie were the reward of the day. Have a look at our results at Old St. Mary's Chapel on Front Street. This was team-work. Volunteers have told us they want tasks and projects. We provide them to be sure. Within two days of our "work day" we had our first meeting celebrated as a potluck. We were graced by our visitors and guests, the Springtones, who serenaded us with an uplifting and spirited medley of song. We were

(Continued on page 2)

October 23 is YARD SALE day.

We need donations. Help us with the sale.

The Rocklin Historical Society is having a Yard Sale. The day: SAT, OCTOBER 23, 2010 from 8 am until 4 pm at Gene Johnson's historic home at 5200 Fifth Street. We will be receiving donations at that address after October 16. Call 624-0241 if you want to arrange for us to pick up your items. We need baked goods, plants, whatever you can contribute.

Also, we will be setting up, selling and tearing down from 8am until 6 pm on both October 22 and 23. We need helpers on Friday October 22 and on sale day. Call Ronna Davis on 315-9083 if you would like to help. This is our fundraiser; everybody helps.

Know your docents

Gay Morgan

Kathie Nippert is a busy lady. She works full time as a Project Assistant for Sequoia Pacific Builders who are currently working on the new Rocklin Library at the corner of Rocklin Road and Granite Drive. She still finds time to be an active member of the Rocklin Historical Society, serving as Treasurer for the second time and volunteering as a docent once a month. She also did the newsletter for a time.

She was born in Austin, Texas but moved to Rocklin in 1966 with the rest of the Rodman family. She has two sisters and two brothers. She went to Rocklin Schools, Parker Whitney and Rocklin Elementary and remembers teachers Richard Borbe, Larry Brown and Judith Harder. She went on to Oakmont High School and Sierra College. She still hates tests.



Kathie Nippert

She remembers a walking field trip to the site of the old Round House for the dedication of the Historical Marker. Her memories include the Jubilee for the 75th Anniversary of the City of Rocklin, parades, carnival rides in the field next to City Hall, whiskerino contest and a big dance right on Rocklin Road. Hamburgers were only fifty cents at the Ranchburger. Trips to the dump were fun too. There was a sense of danger there and sometimes interesting "treasures" could be found. She fished for blue gill and swam in Antelope Creek instead of the quarry because she heard lurid tales of injuries from hidden rocks and very deep water.

When she read in the Placer Herald that the Rocklin History Society was going to renovate the Fletcher Moon House to serve as a Museum, she wanted to be a part of the effort. She joined RHS and went to work.

She wields a mean paintbrush.

She is married to David Nippert who knows a good deal about painting too. There are two daughters, Katherine and Stephanie. Katherine's hobby is photography, taking pictures of old Rocklin. Stephanie is a softball player and goes to college in Oregon.

Besides gardening and reading, Kathie loves to travel and recently, after taking Stephanie back to school, extended her trip to Idaho to visit Margo Kantola, (a member of the Ruhkala family and RHS) on to Montana to see her brother and his wife at their art gallery. She then went to Wyoming to see her sister and her husband. Along the way she visited four History Museums, of course. Three thousand five hundred miles in ten days!

We are so pleased to have this straightforward, no-nonsense, super organized Rocklinites with the dry sense of humor in our organization.

(Continued from page 1)
president

pleased to have them join us for an evening of fantastic food and equally pleased to get acquainted with this wonderful group of volunteers contributing their skills to our community. I'm sure we felt a common bond of civic duty and elevation.

We have two new videos for our Society's use thanks to Mike Patten of MJP Outdoors. Both feature Roy Ruhkala, our founder and past-president splitting granite and guiding us through the basement granite exhibit at the museum.

Allan Stone has volunteered and is organizing others for our Oral Histories project. Our goal is to record the histories of those still living, focusing, of course, on Rocklin history. As for future events, on October 15 we will go as a group to the Medical Museum in Auburn with lunch to follow in historic Old Auburn.

Our October meeting will be held in Old St. Mary's Chapel on October 18.

We will have a yard sale on October 23 at 5200 Fifth Street. Your donations and volunteer help for this fun event will be appreciated.

Our November meeting will be on the 15th at the chapel.

On December 4 at 4:30 we will host a Christmas Tree Lighting at the Chapel with musical performances and the arrival of Santa on a fire truck.

And, finally, in place of a regular meeting on December 20, we will have an evening of holiday festivities at the Rocklin History Museum.

I feel my first boss would approve of how we work and play well together. For your offers of help and for your questions and suggestions please phone Gaynor Morgan at 624-2355.

Special thanks to:

- **Mike Clark** for clearing the weedy field on the south side of the chapel and
- **Mike Patten** for creating DVDs of Roy Ruhkala as Roy (1) described the function of granite mining tools in the basement of the museum and (2) demonstrated his method of splitting granite at the Heritage Trail Days on August 7 and 8, 2010, and
- **Gary Sladen** of West Valley Striping for painting white divider stripes at the history museum's parking lot.

Garden chatter

Sally Huseby
Garden Chairperson

On Saturday, September 18, 12 hardy workers came to work at the chapel garden. I was so pleased by the turnout:

Jim Carlson
Ronna Davis
Don Schuman
Mary Boyd
Dave Baker
Janet Currier
Gene Johnson
Karen Lokey
Barbara Chapman
Roger Lokey
Kathy Nippert
Mary Etta Holland

We replaced plants that had died the previous summer due to the extreme heat and a few trumpet vines that froze during the winter. Everyone worked very hard and we had completed the planting by 10:00 am! We then tied the vines to the new trellis. Gene Johnson and Jim Carlson also weeded at the rear of donation garden. Bark was spread in front, back of notice board back to maple trees. Our gardens look really pretty and I am very thankful for everyone's help.

Progress on oral histories

Allan Stone

Our RHS Oral History project is nearing operational status. The group of volunteers, Gary Day, Ronna Davis, Ellen Griggs, Susan Browning and Allan Stone, will be meeting with Dr. Patrick Ettinger, Associate Professor of History at CSUS, on October 5th for a half day seminar to familiarize themselves with the elements of taking oral histories. Dr. Ettinger is well known in the field for his interest and expertise with oral histories.

When that training is complete, the group will put together the necessary video and audio equipment and start the process of recording interviews with Rocklinites who can provide insights into the history of our community. And, of course, that means that it's time for members to nominate persons whom they think may have a story to tell...a story that the committee can record and make available as reference material for years to come.

The committee welcomes ideas for interviews from all members of our community. If you have a suggestion, send it to Allan at firestone@starstream.net.

A new library for Rocklin

Gay Morgan

Rocklin readers are eagerly awaiting the opening of the new library on the corner of Rocklin Road and Granite Drive. There will be more parking, more space, more books and materials and more computers.

Rocklin has had a library facility since the Women's Improvement Club started a small lending library. Their clubhouse was located on Second Street. The house still stands there and is now the home of Bertie Nevarez. In 1943 Jennie Minkkinen became the librarian of the Rocklin Branch of the Placer County Library, on the first floor of the City Hall which was the granite building on Rocklin Road.

Jennie and the books moved across the street to what had once been a church. When Mrs. Minkkinen retired, Mary Emily Smith became the Librarian. This building served Rocklin from 1965-1985.

An energetic group, the Rocklin Friends of the Library, was successful in convincing the "powers that be" to fund a brand new library on Fifth St., in Springview Park. That facility opened in 1985.

Later the FOL worked their magic again and increased the size of that library. Now it is once again bursting at the seams. Soon they will move to the new building which is more than twice the size of the current one.

Pictures of the library's history are on display in the Rocklin History Museum.

History Museum tours

Gay Morgan

The Rocklin Chamber of Commerce Leadership Class toured the History Museum on September 2nd. A local group of Red Hat Ladies visited on September 15th. More than 60 third grade students from Antelope Creek Elementary School did a walking tour of Old Rocklin and the History Museum on Friday, Sept. 17th.

Tours are conducted by Susan Brooking and Gay Morgan and are available for groups of ten or more by calling 624-2355 or e-mailing gfmorgan@att.net.

Please submit your 2011 dues

If you received this newsletter in the mail, please look at the address label on the envelop. If the number after your name is not an 11 you can now pay your dues for 2011.

Please send your \$20.00 renewal dues to:

Rocklin Historical Society
P. O. box 1
Rocklin California, 95677

The Placer County Citrus Colony

Gary Day

Auburn orchardist Moses Andrews originated South Placer County's citrus industry in 1871 when he first marketed commercial quality oranges from a tree that he had started from seed in 1860.

Andrews' tree started a movement among deciduous fruit growers in the Antelope Valley, along the Rocklin/Loomis /Penryn corridor, to convert some or all of their plantings to citrus, and Placer County's citrus sales boomed during the 1870s and 1880s. Thermals rising along the upper slopes of Sierra foothill ridges minimized frost damage and promoted early ripening, so area growers were able to profit nicely as the early fruit drew high prices in eastern markets.

To the west, on the opposite side of Boulder Ridge, Joel Parker Whitney shipped citrus from the orchard on the slopes above the vineyard at his 20,000 acre Spring Valley Ranch. But in the mid 1880s Whitney developed bigger plans for Placer County's citrus business.

Whitney traveled to and from Europe often, once famously to the 1867 Paris Universal Worlds Fair and Exhibition as an ambassador from the Colorado territory, promoting investments in Colorado mines. He met Lucy Chadwick in England in the late 1870's and brought her to the ranch, marrying her in Sacramento in 1881. The couple's affinity for English Society inspired Whitney, in the mid 1880s, to make the ranch his home and to convert about 40 acres into an estate

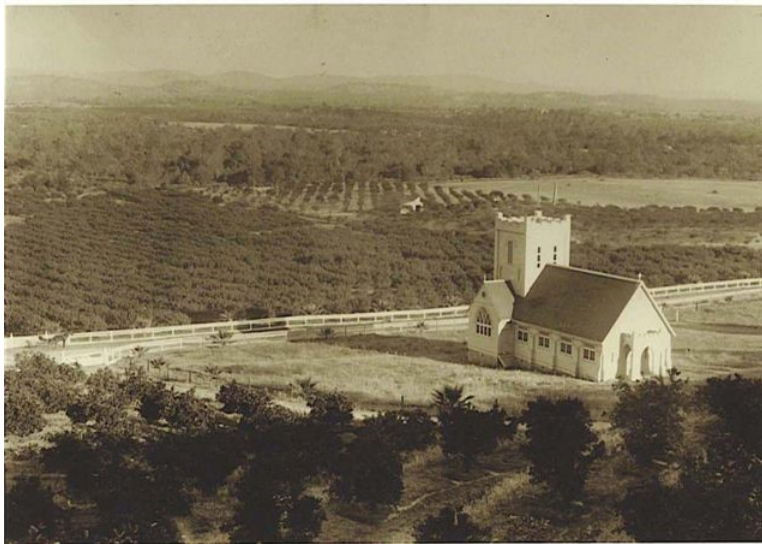
worthy of an English baron. He built a twenty-room mansion called The Oaks and connected it to downtown Rocklin over granite bridges, some with Roman arches in the style of bridges of the English countryside. He imported English Shire work horses, built tennis courts and a golf course, bred greyhounds for fox hunts (substituting rabbits) and otherwise brought English style living to the ranch. His next project was to bring Lucy's countrymen and their English society to the area.

In 1888 he set aside 3025 acres in the northeast corner of the ranch, including the entire four mile length of Clover Valley, and enlisted landowners in the Antelope Valley to set aside about 4000 additional acres. On April 2, 1888 the group filed for incorporation as the Placer County Citrus Colony for the purpose of selling 10 acre

citrus ranches, mainly to English gentlemen. Since hydraulic gold mining was declining in the late 1880s, waterways were unclogging and Whitney made arrangements to extend the Birdsall Irrigation Ditch into colony lands to ensure that the orchards of his English friends had sufficient water.

By 1890 about twelve wealthy English families had arrived. They built fine homes and filled them with expensive furniture and art work. They cleared land and planted both citrus and deciduous fruit, mainly with hired labor.

By 1892 Citrus Colony orchard yields were bringing profits and by 1893 there were



Colonists used the second story of a Loomis fruit shed for Sunday services until 1896 when they constructed this Citrus Colony Episcopal Church of all Saints on Delemere, now Delmar, Avenue near Rocklin. Joel Parker Whitney donated the land.

more than 125 residents in the colony.

Whitney and his friends from England wanted the social life of affluent English families, so in 1890 Whitney bought a Frenchman's granite chateau on the eastern slope of Boulder Ridge overlooking the Antelope Valley, and converted it to a clubhouse, a gathering place for the colony's Citrus Colony Club. Members built tennis courts and a cricket field in front near Delemere (now Delmar) Avenue.

The clubhouse was a place to meet informally and to play parlor games, especially on Wednesdays and Sundays. Concerts featuring music of England were popular, especially smoking concerts where the ladies allowed the gentlemen to smoke during the performances. Club members celebrated for three days in June 1897 for the Diamond Jubilee of British Queen Victoria.

The clubhouse was also headquarters for vigorous sports such as tennis, cricket, soccer, and rugby. In 1896 the club fielded a state champion soccer team. In 1895 and 1897 the colony's cricket team was unbeaten in the state.

But the good times didn't last. Fruit sales slowed significantly in late 1893 with the start of the depression of the mid 1890s, and although immigration from England continued until late in the decade, some colonists started to abandon their investments.

Tough financial times in the colony highlighted the colonists' indolent lifestyles and their lack of skill in their orchards. As fruit prices declined, they were unable to compete successfully with more established and harder working farmers outside of the Colony.

Also, by the late 1890's malaria was afoot in the area. Farmers knew of the vector but methods for control were not fully effective. By 1899 colonists were fleeing, many back to England. The water that had brought a promising future for South Placer County agriculture had also brought the mosquitoes that doomed the colony.

Gradually the few remaining colonists and local farmers returned the orchards to mainly deciduous fruit production and by 1905 the colony was defunct, dissolved by the state for failure to pay taxes.

Today much of the citrus colony area is under public use or under development with housing and businesses. The land is

too valuable to justify large scale commercial fruit farming, however several gentleman farmers grow, and some profit from, deciduous fruits and frost resistant citrus like mandarin oranges.


The Citrus Colony clubhouse is now a residence on Delmar Avenue. Citrus grove terracing is still visible behind on Boulder Ridge. Terracing and a few citrus trees are still visible on the slopes above Whitney's vineyard, below and west of Rocklin's Boulder Ridge Park. A Clover Valley resident saw what might have been the valley's last colony citrus tree yield to frost in the 1970s.

Moses Andrew's tree started South Placer County's citrus industry, but from 1888 until 1905 Joel Parker Whitney and his

(Continued on page 4)

(Continued from page 3)

Placer County Citrus Colony brought us one of the most colorful periods in the development of California agriculture.



Rocklin Historical Society
Board of Directors
James Carlson, President
Sally Huseby, Vice President
Gene Johnson, Secretary
Kathy Nippert, Treasurer
Ronna Davis, Events
Gary Noy, Board member
Karen Lokey, Board member
Jean Sippola, Board member
Skip Gebel, Board member
Carol Powell, Board member
Roger Lokey, Past President
Roy Ruhkala, Past President

Newsletter proofreading by **Allan and Marie Stone**

Newsletter proofreading by **Allan and Marie Stone**

Rocklin History Museum

The Rocklin History Museum is located at 3895 Rocklin Road at the corner of San Francisco Street. The museum is open from 1 to 4 pm on Wednesday, Saturday and Sunday. Group tours are available for 10 or more people by calling Gay Morgan on 624-2355.

Help fill the scrapbook!

Mary Etta Holland is keeping a scrapbook of published information about Rocklin's history and The Rocklin Historical Society. If you spot an item in your reading please clip it with the publication date showing and drop it off at the Rocklin History Museum tagged for Mary Etta or call Mary Etta at 435-9043.

Old Saint Mary's Chapel is available for weddings, memorials and other events.



Earlier this decade, the Rocklin Historical Society moved the chapel, from its original location about 2000 feet south, to Heritage Park in Rocklin's Front Street Historic District. The chapel is at 5251 Front Street across from the 105 year old granite Barudoni Building. The chapel's restoration, completed in 2007, duplicates the original 1883 construction in fine detail.

Contact Roger Lokey at 415-1150 for a free tour. If you are a bride-to-be you can ask Roger to show you how to pull the rope to toll the stee-

Mark Your Calendar

October 11, 2010

4 pm
RHS Board meeting
Old Saint Mary's Chapel

October 13 and 15, 2010

10 am
Gold Country Medical Museum Tour
Contact Barbara Chapman
415-0153
bchapman1234@sbcglobal.net

October 18, 2010

7 pm
RHS general meeting
Fire on the Divide
Nolan Smith, CDF
Old Saint Mary's Chapel

October 23, 2010

8 am
Rocklin Historical Society Yard Sale
at the Johnson's historic home at 5200 Fifth Street. Call 624-2378 after 10/16 to have your stuff picked up.

November 8, 2010

4 pm
RHS Board meeting
Old Saint Mary's Chapel

November 15, 2010

7 pm
RHS general meeting
Nomination of 2011 Officers
and
Presidential Cookie Lady
Bev Young has recipes from all presidents from Washington to Obama. Many comical happenings related & fresh baked cookies to enjoy.
Old Saint Mary's Chapel

December 4, 2010

4:30 pm
Christmas Tree Lighting
Old Saint Mary's Chapel

December 13, 2010

4 pm
RHS Board meeting
Old Saint Mary's Chapel

December 20, 2010

7 pm
RHS general meeting
Election of Officers for 2011 and holiday party
Rocklin History Museum