

## President's Message

Dan DeFoe

Greetings current and future RHS members. (I like an optimistic salutation!) As 2013 began the Rocklin Historical Society's leadership faced both challenges and opportunities. An example of the former was convincing the California Department of Finance to remove our museum and St Mary's chapel from the chop-



President Dan DeFoe

ping block, and of the latter successfully marketing St Mary's as a desired regional wedding destination. How did we do?

With critical help from our California State legislators and their staffs, our city manager and many concerned others, the Department of Finance recommended transfer of both properties to the city of Rocklin.

The dynamic team of Ronna Davis, Nancy Lohse and Skip Gebel have truly made St Mary's chapel into one of the most popular wedding venues in northern California. Congratulations team!

We're also jazzing it up at St Mary's with two scheduled concerts in July and September. Live jazz debuted on May 11 with the singing duo of Karin DeFoe and her mother Cherri

(Continued on page 8)

## Retired grade school teacher shares love for local history

Gay Morgan serves as docent at Rocklin History Museum

Gloria Beverage

Gay Morgan's roots are firmly planted in Rocklin soil. An elementary school teacher for 35 years, Gay

prefers local historic sites. Although she taught at Rocklin and Parker Whitney Elementary Schools as well as at Spring View Middle School, Gay's favorite memories are tied to fourth-grade and the study of California history. "We had such fun," she said. "We made trips to Coloma, the California State Railway Museum, Sutter's Fort, toured Old Sacramento and the Empire Mine."

Since retiring 18 years ago, Gay has turned her focus to Rocklin's history – serving as a docent and overseeing displays at the Rocklin History Museum at the corner of Rocklin Road and San Francisco Street. And she's

delighted to assist with the student tours of the museum. "It's important for them to know how and why

Rocklin got here," she said. "And I encourage them to come back and bring their parents. And they do."

Take a drive through Rocklin with the 83-year-old resident and she'll point out the homes and haunts of her childhood in this community. "I must have lived in about 100 places all over town," she laughs. "My grandmother was a Finn immigrant who married a salon keeper," she said. "My mom, who was born just before the Depression,

grew up in Rocklin, got married and moved far away -- to Sacramento."

When she was three years old, Gay's father lost his job and the family returned to Rocklin to live

(Continued on page 8)



*As a docent for the Rocklin History Museum, Gay Morgan often portrays women from Rocklin's past at various events. Raised in Rocklin since she was three, Morgan is passionate about preserving Rocklin's history.*

**Save July 20 for an event on the patio of the Old Saint Mary's Chapel on Front Street  
Hors d'oeuvres and Jazz**

An evening with songstress Karen DeFoe and her ensemble of talented musicians  
See page 3

## from the mayor of Old Town Rocklin

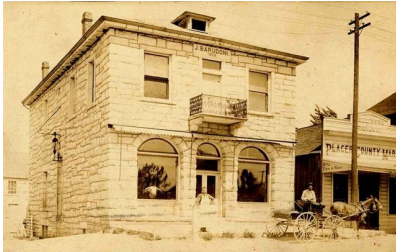
Gene Johnson



**Subway plans to open** at the old Blue Moose location this week. The Farley and Kykendall families donated Blue Moose deli artifacts and signage to RHS.

**Jasmine's Donut Shop is up** and running near the Dollar Tree store after making room for a 7Eleven at the corner of Pacific and Sunset. Work is underway at both the 7Eleven and Walmart Neighborhood Market locations on Pacific St.

**Jeff Lingren is preparing** the main floor of the stone Barudoni Building



on Front Street to be a wine tasting outlet and a display location for his decorative ironwork.

**Earthwork for Rocklin Road Roundabouts** at Grove St. and Meyers St. is in process with attendant traffic disruption.

**The City is on the fast track** to improving the look of Old Town Rocklin. New plantings are sprouting up and new curbing and marked parking spaces are going in near Rocklin Road.

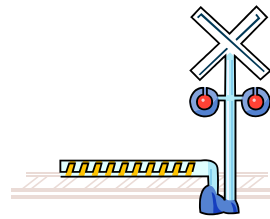
**Dan and Jill Gayaldo and the Kiwanis Club** and Gary Day were honored for community service at the Ruhkala Awards ceremony.

**Don Schuman celebrated his 80th Birthday** with family and friends at

Fat's Restaurant. **Street Barriers** are being installed at the center of most



Rocklin RR crossings. Federal Transportation Board statistical analysis indicates the crossings with barriers and freight train horns used



only when the engineer senses danger will be slightly safer than the current mandatory

horn blowing.

**Famous Mo's isn't (yet).** After Googling Mo and finding little more than Missouri I visited Mo's location on Rocklin Road to learn more about Mo who, reportedly, had worked at the Big Gun quarry. It is not clear how the Legend of Famous Mo developed but it seems the living Mo may be a Chihuahua in Auburn. Dr. Carlson suggests we try Mo's coffee – open 7 am to 3 pm.

**Roy Ruhkala and David Baker led** an expedition to retrieve quarry artifacts donated by Bob Edmonson, the owner of the Victor Wickman/Alexson quarry on Winding Lane. Major components of the quarry derricks were extracted from an overgrowth of poison oak by RHS volunteers and moved by the City of Rocklin to the City Corporation yard near Del Mar Ave. An impressive cable and support ring were moved to the Rocklin History museum.

**With Ronna Davis' leadership** the sale went very smoothly. Ronna's notes from past years make the sale easier and better each time.



## docents needed

Jean Sippola



We are scraping by at the museum with very few docents. If you are already a docent, do you have a friend or neighbor

who can work with you?

Can you volunteer for more days? If so please call me at 652-1034.

## Please help for Heritage Trail Days

Jean Sippola

The weekend of August 10th & 11th is when all museums will be open for Heritage Trail days. Many special events are planned and we need docent volunteers. There will be a morning shift from 9:30 a.m. - 12 noon and an afternoon shift from noon to 4 pm on both days.. Last year we hosted 200 people. Please call me on 652-1034 to volunteer .

## Please send me you email address!

Christy Barros

The Rocklin Historical Society uses email extensively for notifying members of upcoming events. If we don't have your correct email address you are not being so notified. We use email addresses only for RHS purposes. So if you want to ensure that we have a correct email address for you please send a message to me at:

[christy@inetinc.net](mailto:christy@inetinc.net)

Also, RHS is expanding the email address file to include non-members who have an interest in Rocklin's history. If you know of such people please send their email addresses to me or ask them to send me a message and I'll add them to the list.

## Hors d' oeuvres and Jazz on the patio at Old Saint Mary's Chapel

a gala event to raise funds to rebuild Rocklin Hose Company Number One's 1894 firehouse



Jazz singer Karen DeFoe entertains on the patio at The Old Saint Mary's Chapel on Front Street in Historic Downtown Rocklin on July 20.

gourmet  
hors d' oeuvres by Rubino's  
Ristorante, and jazz vocals by  
*KARIN DEFoe*,  
on the patio at Old Saint Mary's  
Chapel, 5251 Front Street in His-  
toric Downtown Rocklin  
**Saturday July 20, 2013**  
**At 8:00 pm**  
**Admission \$39**  
**No Host Bar**

For tickets visit Rubino's Ristorante in  
Downtown Rocklin or call Rubino's at  
624-3401,  
Or call Gay Morgan at 624-2355

### *Country Roads* *Gay Morgan*

As I sat patiently waiting for the backhoe to lumber across the broken up street in front of me, I began to recall when this street, Rocklin Road, was different. I don't even think we called it Rocklin Road; it was just the county road out to the "country"

There were no traffic signals or white lines, no freeway, shopping centers, gas stations, fast food, faux granite monoliths or Sierra College. It was just a narrow, barely paved road that meandered along up and down through woodsy areas, pastures, vineyards, beautiful orchards, and dairy and poultry farms, all of which were enclosed by wicked barbed wire fences. It crossed the creek where kids sometimes swam or fished for blue gill. (At other times we went clear across town in the opposite direction to the Johnson swimming hole on Antelope Creek.).

In the low spot, near the quarry that is now in front of the new library, (where the older kids swam) blackberries grew. I remember going there with my grandma to pick the berries and put them in little buckets that I think were empty lard cans. It was a hot and scratchy job but blackberry pie was worth it.

In early June, real cowboys and cowgirls on horses drove their cattle down the road to Highway 40 to take them to the mountains for the summer. I can still hear the cowbells and the cattle mooing, irritated at having to move along. Many ranchers drove them all the way up the Highway and cars just had to wait for them. Some loaded them on to trains from the corral that stood at Midas and Pacific.

In those days you went to the ranches to get fresh produce, driving out that same funny old road. Sometimes the ranchers let us pick our own peaches, apricots, corn, cucumbers, peppers and tomatoes. (Those tomatoes were the best I ever tasted.) We were really ahead of the "Farm to Fork" thing.

At last the flagman waves me on. These were great memories but times change and some things get better. Air-conditioning for example, Priceless! Roundabouts?—we'll wait and see.

## We have a winner

Nancy Lohse

Every year third graders from throughout the Rocklin School District visit the Rocklin History Museum and Old St. Mary's Chapel as part of their state curriculum in Social Studies. After their visit they also take part in the Rocklin History Essay Contest. A winner is picked for each class and they receive a blue ribbon to celebrate their success. This year we are starting a new tradition of picking one of the winning essays to print in the news letter. The museum docents read through the essays and chose Matthew's for you to enjoy! The other blue ribbon winners are on display at the museum along with their beautiful pictures. Please take time to visit the museum and read these creative essays about Rocklin history.



Third grade essay contest winner Matthew Camber

Name: Matthew Ms. P

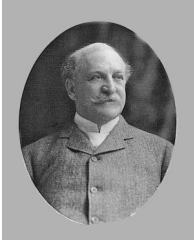
St. Mary's Church

St. Mary's Church used to be an old broken down church. People were going to tear it down and make it into a parking lot. So people decided to move it. There were lots of people there pulling on the rope. The church was so heavy that it had to be pulled by a truck! So, when they had set it on the ground, they started to rebuild it. There was a lot of work to do. The steeple got pecked off by woodpeckers, there was no bell, and the inside of it was a mess! After months, it was done. The people had put new windows in, there was a new steeple, and a new bell. Now people went there for weddings. But the people thought there was one thing missing. A fountain! So "some third graders" saved up their money and bought a fountain. There is a sphere ball in the

Matthew (Libby Ulew)

St. Mary's Church

middle with water pouring all over it. They were pretty satisfied with what they did. Now St. Mary's Church is as good as new!



## Keeping Up With Joel Parker Whitney

### A Study of His Personal Diaries and Writings

The first in a series by  
*Bill Marble*

*Note: Joel Parker Whitney owned the Spring Valley Ranch which covered nearly 20,000 acres west and north of downtown Rocklin.. He was instrumental in the economic development of this region from 1855 until 1913.*

I recently transcribed Whitney's memoirs from scanned copies of two diaries that Jean Day had obtained from Whitney's descendants. One diary covered the period from 1888 to 1890 and the other covered 1899 to 1903. Both diaries included copies of published articles and letters that Whitney had submitted to newspapers.

In this and upcoming articles I intend to document for you some of what the materials have shown us about this fascinating man.

It would be difficult to overstate the impact that Joel Parker Whitney had on the economic development of the western states, including California, and especially the Rocklin area.

Perhaps the first fact that jumped out of the material for me was that he was not a full-time resident of his Spring valley Ranch near Rocklin. Whitney was perpetually on the

move around the country like you or I might go to different rooms in our home. He had "homes" in Maine, Massachusetts, New York, New Jersey, Colorado, and California.

During the period of his 1899 to 1903 diary, when he was in his mid-60s, he spent about 30% of his time at his Camp Whitney home in the Rangeley Lakes Region of Maine, about 20% of his time at his Oaks mansion near Rocklin and approximately 10% of his time in each of Boston, New York, New Jersey, and Colorado. Some of his travel was related to his businesses, of which there were many, and some was for personal reasons. He was deeply involved in mines, railroads, real estate, fruit raising, farming, and sheep raising. He was an avid hunter and fisherman. During his time in Maine he and his family were continually fishing for trout and hunting deer.

His time in New York City was business related but he also wanted to be near his teen-aged daughter, Beryl, who was attending Miss Ely's School for Girls.

His New Jersey trips were mostly for personal reasons, related to his

wife's ailing brother and his developing obsession with golf.

His time in Colorado was spent managing his interests in mining for metals including silver, gold, and copper. He also had a controlling interest in Colorado's Pueblo Investment Co. which owned the Grand Hotel in Pueblo.

And Rocklin was not his only home in California. He spent considerable time on business-related visits at the **Palace Hotel** in San Francisco.

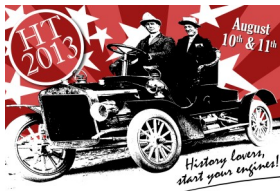
He owned San Francisco's Starr-King Building which went through extensive renovation during the turn of the century period.

And when the summer days got a little too warm, he took his family down to the Del Monte Lodge in Monterey where he sponsored golf tournaments and fished for salmon in the ocean.

Yes, Whitney was full of wanderlust and loved being on the move. He was totally comfortable traveling back and forth across the North American continent and he made eighteen journeys to Europe. He had major personal and entrepreneurial impacts everywhere he went.

Next time: **the 1906 earthquake**

## Heritage Trail Days are scheduled for August.



The 6<sup>th</sup> Annual Heritage Trail will be held on August 10 – 11, 2013. Nineteen participating museums from Roseville to Tahoe will showcase history in a fun and entertaining way. Admission is free to all visitors.

Placer County, California, which crosses the majestic Sierra Nevada was home to a thriving Native American culture, the California Gold Rush, the construction of the Transcontinental Railroad, and an agricultural paradise, which shipped high quality fruit around the world.

The museums, mostly located within 5 miles of Interstate 80 between Roseville and North Lake Tahoe, are open from 10:00 a.m. to 4:00 p.m. on both days.

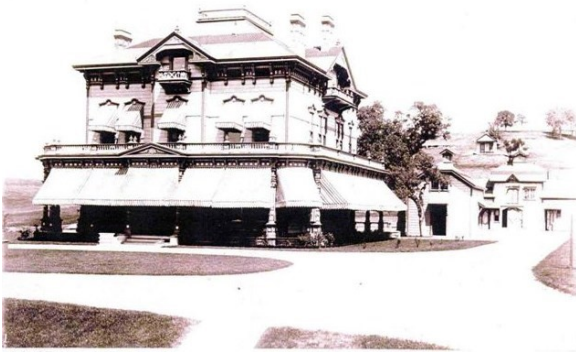
Activities at each museum are varied. For example, visitors to the Rocklin History Museum will get to witness a granite splitting demonstration and those who visit the Gold Country Museum in Auburn will get to learn how to pan for gold or dress up in period clothing.

For complete information visit [theheritagetrail.blogspot.com](http://theheritagetrail.blogspot.com) or call 1-530-889-6500.

## Tamilyn Engel remembers The Oaks.

Gary Day

Western Rocklin is astride the southern 12,000 acres of Joel Parker Whitney's 20,000 acre Spring Valley Ranch of the late nineteenth and early twentieth centuries. In the mid



*Joel Parker Whitney's The Oaks c.1887. Notice the carriage house behind, on the far right*

1880s Whitney set aside 40 acres in the middle of the ranch for a palatial estate for his wife and three small children. The estate centered on a three-story, 20-room, redwood

pied the mansion after his daughter Helen Beryl died in 1935.

But Tamilyn Engel of Citrus Heights lived in the mansion during the summer of 1950 while her parents worked for the Whitney Family Trust. Her stepfather took care of the grounds while her mother cleaned house and cooked for Whitney's descendents and their guests when they visited periodically. Engel remembers that some of the visits seemed to be for

business meetings, possibly to discuss the dissolution and sale of the ranch.

"It was the most beautiful home I've ever seen" she said.

"I remember the interior staircase of dark wood that climbed all the way to the third floor and the entry hall that went from the front entrance all the way to the kitchen in the rear." Engel said that Whitney's office was at the rear near the kitchen, but he used it as a bedroom in his later years to save the climb to the master bedroom upstairs.

The library and parlor were at the front, while the most beautiful room in the home, the red walled and exquisitely fur-

nished dining room, was behind the parlor. Room entrances off the main hallway were flanked by tall wooden pocket doors

There was a fireplace faced with expensive tile in every room except the kitchen and pantries.

In the nineteenth century Whitney's servants used a stairway in back of the kitchen to travel between floors, out of sight of Whitney family members and their guests.

Engel remembers that most bedrooms were on the second floor but there was only one bathroom on that floor. Summer heat made the third floor unusable.

The Horseshoe Cattle Company acquired a large track of ranch land in the early 1950s and demolished The Oaks to save property taxes.

When Sunset International Petroleum Corporation acquired the property in the early 1960s they found several of the mansion's oak doors and stained glass windows stored in the mansion's carriage house.

Today the mansion site is marked by a plaque at the end of Knoll Court in Rocklin's Mansion Oaks neighborhood.



*The Oaks' carriage house in 1960, about 8 years after The Horseshoe Cattle Company demolished the mansion to save taxes.*

-framed mansion which he named The Oaks Whitney died in 1913 and none of his descendents occu-

## Randy Peters

### CATERING & EVENT PLANNING

*Making Your Visions Come True.  
Great Food. Great Service. Stress Free.*

**Full Service Catering &  
Event Planning for All Your  
Business & Social Occasions.**

- ◆ Grand Openings, Ribbon Cuttings  
& Ground Breakings
- ◆ Conferences
- ◆ BBQs
- ◆ Breakfast, Lunch & Dinner Events
- ◆ Movie Shoots
- ◆ Concessions & Sporting Events
- ◆ Wine Maker & Brew Master Dinners
- ◆ Weddings & Rehearsal Dinners
- ◆ Bar & Bat Mitzvahs
- ◆ Graduations
- ◆ Celebrations of Life

**916.726.2339**

[www.RandyPetersCatering.com](http://www.RandyPetersCatering.com)

### Happy Birthday to Old Saint Mary's

Nancy Lohse

Built in 1883 and dedicated as a Catholic church on August 13, 1883, Old St. Mary's Chapel at the corner of Rocklin Road and Front Street is celebrating her 130th birthday this year! Take time to drive by, park, walk the lovely grounds, and sing Happy Birthday to Rocklin's oldest public building! Saved from demolition in 2005 and lovingly restored, Saint Mary's continues to make history as brides and grooms walk down the aisle and stop to ring the bell three times celebrating their wedding!

### another successful yard sale

Ronna Davis



Rocklin Historical Society members Ron Le Doux and David Baker, set up a display at the RHS annual yard sale at the home of

Margaret and Gene Johnson. The sale netted more than \$3,400 for the fund to rebuild Rocklin's original firehouse.

**Help preserve Rocklin's  
history and support his-  
tory-related arts projects.**



**The Rocklin Heritage Fund at the  
Placer Community Foundation sup-  
ports the Rocklin Historical Society**

Now it is possible to make tax-deductible gifts and perpetual endowments that will

support Rocklin Historical Society programs including both visual and performing arts related to Rocklin's heritage. Please contact Veronica Blake at 530-885-

4920 to learn how you can contribute, or go to [www.placercf.org](http://www.placercf.org).



*Local giving. Lasting value.*

(Continued from page 1)  
President

Murphy backed by a trio of outstanding musicians. They all made beautiful music receiving a standing ovation on the patio at St Mary's All proceed from this and future concerts go to support the reconstruction of Rocklin's original firehouse in Heritage Park. On July 20 we hope to repeat the good time by partnering with Rubino's Ristorante for an evening of fine food and fine jazz. For reservations stop in at Rubino's on Pacific Street or call Gay Morgan at 916 624 2355.

The RHS Board is planning a retreat at Sierra College on July 12. "Taking the Next Step" will be the day's theme as Jeff Foltz leads us in pursuing new fundraising strategies. Speaking of fundraising, we are also very happy to report that on June 22 Ronna Davis and her dedicated team of volunteers brought in over \$3400.00 in another successful annual yard sale.

On a more sobering note, the city of Rocklin will soon finalize crucial decisions regarding disposition of the Big Gun Quarry property on Pacific Street. At present, the property has been split into three parcels. Parcel one comprises the quarry pit, the second a small piece adjacent to the hole between the Big gun and Quinn quarries to be set aside for historical development, perhaps a museum. Parcel three includes all of the quarry sheds and remaining equipment and artifacts on site and extending down to Pacific Street. Parcel three has been designated for sale and commercial development. We can only hope to work with the city for the best possible result.

Thank you for your indulgence and support, let me leave you with a quote:

"If you don't know your history, then you don't know anything. You are a leaf that doesn't know it's part of the tree."

(Continued from page 1)  
Gay Morgan

with Gay's grandparents. Eventually her father found work and the family moved into their own home – the first of many homes throughout what is now considered the historic district.

One of her favorite childhood haunts was the Birkner residence next to the town's gas station. The couple had what Gay described as a magnificent park-like garden with lots of magnolia trees and fish ponds. "People would stop for gas and then go and look around the garden," she said. Most intriguing of all, however, were the many monkeys housed in pens throughout the garden.

Gay attended Rocklin Elementary Schools and played in the band at Roseville High where, at age 16, she met her future husband. Fred was 20 and had just returned from serving with the armed forces. A musician, Fred would often join the high school band for concerts.

Although there was a mutual attraction, Gay was concerned about the age difference. "He was four years older and that's a lot at that age," she said. Fred went off to attend the Conn Musical Instrument Repair School in Elkhart, Indiana and when he returned, the age difference no longer mattered. The couple married and settled in Rocklin.

"Rocklin was like a big family," Gay said. "People cared about one another. My son would get on his bike and I wouldn't see him until supper. The girls would go to each other's houses and play dolls and dress up. The kids used to go out at night and nobody bothered them. If they fell down and skinned a knee, they could go into anybody's house and get patched up."

Before the children were born, however, Gay discovered a love of teaching. After obtaining a provisional teaching credential, Gay began working at Rocklin Elementary School and attended college at night working to earn a teaching credential. "I taught for six years before Lisa was born," she said. "I returned to work nine years later when Stu

and Lisa were both in school full time."

In addition to her passion for history and teaching, Gay loves to read mysteries and biographies. It's no surprise then that she joined forces with other volunteers in the community to help raise funds for the first permanent library building on Fifth Street. And she hosted the library story time at that library for many years. An active member of the Rocklin Friends of the Library, she now oversees the children's and

young readers' section in the Friends' used book store.

Gay has also created a nature preserve in her backyard. She and Fred

enjoy watching the turkey, deer, quail and ducks that live along Antelope Creek, which runs behind their home. She also provides treats for the families of raccoons and possums as well as a few stray cats that visit each evening. "The possums love noodles and pasta," she said.

*For information about becoming a docent at the Rocklin History Museum, call Jean Sippola at 652-1034.*

## Rocklin old timers gather



Ronna Davis

Carol Gebel and Roy Ruhkala peruse the Rocklin Historical Society's archives at the annual Rocklin Reunion at Finn Hall on Sunday, May 26<sup>th</sup>. The event is held on the Sunday of every Memorial Day weekend. Lunch was catered by Randy Peters Catering.

## We have new friends.

Gary Day

Springfield resident Bill Marble will repeat his Rocklin Historical Society General Meeting presentation about the travels of Joel Parker Whitney at the Springfield Gables on August 26. In response to our request for RHS members to attend we received this reply from Springfield History Club President Joyce Marcroft.

"...all Rocklin Historical Society members are invited to Bill's presentation on August 26- no tickets and no charge. The same invitation extends to all our Springfield History Club programs on the 4th Monday of each month, at 1PM in the Whitney Room at the Gables. I will arrange for the main gate ( just off Park) to be open. I also will be "announcing" any of your events to which the public is invited, advising cost, location, etc.

Our Newsletter deadline is the 5th of the preceding month."

In this and future Quarry Quarterlies, Springfield History Club events will be listed among RHS Mark Your Calendar events.

RHS event coordinators should contact Joyce at :

jmarcroft@sbcglobal.net

## Museum

91 year old S. M. Gomez.

Little house on the corner  
With stories filled inside  
Of those that came before us  
From places near and wide

The history of Rocklin  
This town we love so well,  
How it grew and how it swell  
So interesting to tell

We dwell amid the granite  
And quarry formed wells  
From whence the railroad bedded  
And cinder smoke fell

Many, many stories  
All along the way  
Even before the mark was made  
That 1893 day

Now we have our parks,  
Landscaped all around  
And people [pass on streets  
Where trees adorn the ground.

## Mark your calendar

**July 20, 2013, 8 pm**

**On the patio at the Old Saint Mary's Chapel**

Hors d' oeuvres and Jazz

Starring Rocklin Jazz singer Karin DeFoe with her ensemble of talented musicians

Admission—\$39.00

For tickets call Gay Morgan on 624-2355 or go to Rubino's Ristorante

**July 22, 2013, 1 pm**

**At the Springfield Gables, Whitney Room**

The main gate at Springfield will be open.

A talk by Maj. Gen. Robert Brandt ( veteran of Vietnam War and Military Historian)

**August 10 and 11,**

**10 am to 4pm, each day**

Annual Heritage Trail Days.

At the Rocklin History Museum

3895 Rocklin Road

**Aug. 26, 2013, 1 pm**

**At the Springfield Gables, Whitney Room**

The main gate at Springfield will be open.

Bill Marble, Whitney Historian speaks on Joel Parker Whitney's travels.

**September 14, 2013, 8 pm**

**On the patio at the Old Saint Mary's Chapel**

An encore performance

Hors d' oeuvres and Jazz

Starring Rocklin Jazz singer Karin DeFoe with her ensemble of talented musicians

Watch for mailings and an email with ticket information.

**Sept 16, 2013**

**RHS Annual Pot Luck**

Details later

**Sept. 23, 2013, 1 pm**

**At the Springfield Gables, Whitney Room**

The main gate at Springfield will be open.

A talk by Dave Lindsay ( NASA astronaut and Space Historian)

### Also:

Watch the October newsletter for details on Professor Dan DeFoe's presentation about the Chinese expulsions of 1877.

### Also:

Rocklin Historical Society planning meetings are held every Tuesday at 7:30 am in the cafeteria at Oracle, corner of West Stanford Ranch Road and Sunset.

## MAKE HISTORY AT OLD ST. MARY'S CHAPEL

Nancy Lohse



Have your wedding in a charming, beautifully restored historic chapel at Heritage Park in old downtown Rocklin. St. Mary's has been the site of weddings since 1883 and you, too, can become part of this wonderful history. Call to set up a private tour for your special day!

916-415-1150

[www.OldStMarysChapel.com](http://www.OldStMarysChapel.com)

email: oldstmaryschapel@gmail.com



### Rocklin Historical Society Board of Directors

**Dan DeFoe, President**  
**Kathie Nippert, Vice President**  
**Patrice Cardott, Secretary**  
**Russ McNeill, Treasurer**  
**Ronna Davis, Board member**  
**Gloria Beverage, Board member**  
**Jean Sippola, Board member**  
**Sally Huseby, Board member**  
**Gene Johnson, Board member**  
**Nancy Lohse, Board member**  
**Jeff Foltz, Board member**  
**Dr. Jim Carlson, Board member**  
**Skip Gebel, Past President**  
**Roy Ruhkala, President Emeritus**

Newsletter Proofreading by Marie Stone

## A night for jazz

Photo by Ronna Davis



Jazz singers Cheri Murphy and her daughter, Karen DeFoe, perform under the stars on May 11 at the Rocklin Historical Society's Wine & Jazz event on the patio at Old St Mary's Chapel.

See page 3. for information about the next RHS jazz event .

## Rocklin Historical Society, financial position as of June 30, 2013

Russ McNeill, Treasurer

Balance forward April 30, 2013	<b>\$ 36,069.61</b>
<b>Total Income</b>	<b>\$23,748.59</b>
<b>Total Expenses</b>	<b>( \$14,367.76)</b>
<b>BALANCE ON HAND June 30, 2013</b>	<b>\$ 45,450.44</b>

Mechanics 11 month CD (.45%) (1/13/14)	\$ 30,683.19
Mechanics Bank Chapel Checking	\$ 8,116.32
Mechanics Bank RHS Checking (Uncommitted)	\$ 17,482.87
Committed Funds:	
3rd Grade Transportation Account	\$ 900.00
Children's Firehouse Fund	\$20,503.53
Rocklin Homecoming Reunion	\$2,564.04
Heritage Park Kiosk	\$4,000.00
<b>TOTAL BALANCE IN ALL ACCTS</b>	<b>\$84,249.95</b>
Rocklin Heritage Endowment Fund	\$27,154.93