

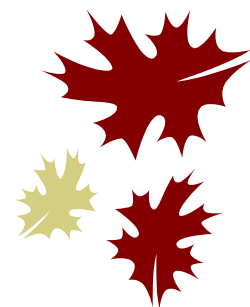
President's Message

Dan DeFoe

*Autumn is a second spring when
every leaf is a flower*

Albert Camus

Yes, the season is changing as noted at the Rocklin Historical Society's recent welcome back potluck dinner. At Sierra College mid-terms are in preparation with final exams looming. Another year will soon pass into history so it is a good thing to pause and reflect on past accomplishments and consider future opportunities. 2013 will be remembered as the year old St Mary's on Front Street



President Dan DeFoe

became one of northern California's favorite wedding venues. St Mary's beautiful patio was also the site of a series of evening jazz concerts enjoyed by all who attended. Proceeds went to support the rebuilding of Rocklin's original firehouse in Heritage Park. RHS also participated in important community celebrations including Patriot Day and the annual

(Continued on page 2)

Rocklin Police to honor first officer killed in line of duty

Gloria Beverage

In the history of Rocklin, only two officers have been killed in the line of duty: City Marshall Sam Renaldi, who died in 1914 and Officer Matt Redding, who was killed in 2005. "Honoring our fallen heroes is important for the culture of the Rocklin Police Department," explained Police Chief Ron Lawrence. "Most people in our community remember

of its first fallen officer.

City Marshal Sam Renaldi was shot by saloonkeeper Ulysses Holmes while trying to enforce a curfew violation on Feb. 18, 1914. Earlier in the day, Holmes had apparently gotten into an argument with a female employee at his saloon on Railroad Avenue. Renaldi and his deputy confronted Holmes at the



Rocklin City Counsel Member Marie Huson led a successful 1990 effort to have Renaldi's name included on the Police Officer's Memorial at 10th and Capital Avenue in Sacramento

our second and most recent Rocklin officer, Matt Redding, who was killed in the line of duty in October 2005."

However, Lawrence continued, Rocklin has neglected the memory

livery stable at the corner of what is now Pacific Street and Rocklin Road. Holmes was shot three times, while Renaldi was hit once. Both men were transported to the hospital and died the following day. "Without memorializing their ultimate sacrifice and ensuring their memories are a part of the cultural fabric,"

Lawrence continued, "memories tend to fade and people forget. As many have forgotten Marshall Renaldi 100 years after his death, many may also forget Officer Redding 100 years from

(Continued on page 8)



The Rocklin History Series continues on Saturday, October 26, and Sunday, October 27, at 3:00 pm each day, with dramatized historical tours of the Rocklin Cemetery.

See page 2.

Randy Peters

CATERING & EVENT PLANNING

Making Your Visions Come True.
Great Food. Great Service. Stress Free.

Full Service Catering & Event Planning for All Your Business & Social Occasions.

- ◆ Grand Openings, Ribbon Cuttings & Ground Breakings
- ◆ Conferences
- ◆ BBQs
- ◆ Breakfast, Lunch & Dinner Events
- ◆ Movie Shoots
- ◆ Concessions & Sporting Events
- ◆ Wine Maker & Brew Master Dinners
- ◆ Weddings & Rehearsal Dinners
- ◆ Bar & Bat Mitzvahs
- ◆ Graduations
- ◆ Celebrations of Life

916.726.2339

www.RandyPetersCatering.com

(Continued from page 1)
President

Hot Chili and Cool Cars event spreading the word and encouraging new membership. We look forward to an exciting future partnering with Rocklin's Police and Fire Departments helping to honor the history of both institutions and their contributions to our community. We also see challenges ahead as the city redevelops the Big Gun property. The legacy of Rocklin's granite past must be preserved in a way that teaches future generations the history of an industry that helped build California. As nature prepares to burst forth in a final blaze of glory this autumn season, let's reflect on things well done and prepare for the opportu-

The Rocklin History Tour continues at the Rocklin Cemetery



The Rocklin Cemetery is at Kannasto and South Grove to 5 pm on Saturday, October 26 and Sunday October 27.

Admission
\$10.00

payment and reservations required

Make reservations for either Saturday or Sunday by calling Gay Morgan at 624-2355.

Characters from Rocklin's past will resurrect to educate and entertain you with stories of Rocklin's history. Free coffee, nissua and cookies after the event! Two performances: 3

Help preserve Rocklin's history and support history-related arts projects.



The Rocklin Heritage Fund at the Placer Community Foundation supports the Rocklin Historical Society

Now it is possible to make tax-deductible gifts and perpetual endowments that will support Rocklin Historical Society programs including both visual and performing arts related to Rocklin's heritage. Please contact Veronica Blake at 530-885-4920 to learn how you can contribute, or go to www.placercf.org.



Placer
Community
FOUNDATION

Local giving. Lasting value.

about Old Town Rocklin

Gene Johnson

The city has leased Union Pacific Property from Rocklin Road to Midas Avenue. City Manager Horst plans beautification for the area, including a walking trail. The city installed a fence to separate the area from the rails and terminated it with cinder block. Native granite would be more appropriate. The tops of a number of 19th century engine service pits have been unearthed fanning out from the turntable area, an awesome site. The city covered or removed some of the original round house foundation and a new cinder block wall covers a portion of the first pit. I cannot help thinking that the city's good efforts could have been better if the historical society had participated in the planning.

A Subway shop and a 7-11 have opened at the corner of Sunset and Pacific Streets. Wal-Mart Neighborhood Grocery opened on Pacific Street. Dutch Brothers coffee drive thru is nearing completion at Sunset and Springview.

Auvergne (eggplant) Café opened at the old Icing on the Cupcake location on Pacific Street. We can recommend both the roast turkey and eggplant sandwiches on sliced sour dough, with the bargain \$1 dessert bar option.

The Barudoni Building gate showroom, art display and wine tasting venue on Front Street is progressing as evidenced by the application, pasted to the window, to serve alcoholic beverages.

Major construction of 2 roundabouts (Rocklin Road and Meyers and Rocklin Road and Grove (Finn Hall)) is clearly underway. The adjacent area will be a 72-unit apartment complex complete with a sound wall. According to the developer there will be a 10-foot landscape easement and a "very decorative sound wall with pilasters, rock and things like that". This is not a very definitive description, but apparently it is adequate for planning commission signoff. If we must have a sound wall to welcome people to our city, I hope the community can be involved in its design. This

is an opportunity for exceptional public art.

The Old Town Tree Lighting continues as a very special Rocklin event. The date for the all-free 2013 event is Sat Dec 7th; 4 to 7 pm. The historical society, City of Rocklin, Rotary and Kiwanis co-sponsor the event along with major contributors including local businesses and churches. Kids love it; come early for the 4 pm parade; enjoy the rides, cookies and chocolate. Then check



in for a photo with Santa.

The historical society brokered the donation of a load of redwood ship lap building siding, through the Rocklin Lions club, to the Camp Ross Relles Scout Camp near Nevada City. Historical society member Marshall Smith initiated the effort after a visit with Bud Taglio, the siding's owner. Taglio lives on a small ranch in the undeveloped part of Clover Valley.

The city's plan for disposition of the Big Gun Quarry site was at issue at a city council meeting on September 10. The plan would commit the shed area and associated artifacts to be sold as commercial property. The quarry hole would be transferred to the city for government use. Representing the historical society, I requested that the council change the proposal in a way that would preserve the shed and artifacts for governmental use. The city's plan clearly did not recognize the historic importance of the site as affirmed by its listing on the National Register of Historic Places. The council's denied our request by

voting to adopt the plan unchanged..

Historical society President De-Foe, Roy Ruhkala and I addressed the Rocklin Redevelopment Agency Oversight Board meeting on September 27, emphasizing that the Big Gun shed and associated artifacts should be saved for government use and that the artifacts should remain on their historic site. I noted that the city is free to propose a management plan that is best for the community, recognizes our heritage and recognizes that the site is on the National Register of Historic Places. We proposed that the city's Big Gun Property Management Plan be rejected on the basis that the city acquired the site in 2010 without recognizing the value of the site relative to Rocklin's heritage. We followed with the recommendation that the council meet with the historical society to determine if a plan to save the site could be proposed to the state. The over-



Big Gun

sight board denied our request. The management plan is approved for submission to the state Dept of Finance. We can appeal to the state Department of Finance. Letters from the community can help. See Carol Ellis' article on Page 8.

MAKE HISTORY AT OLD ST. MARY'S CHAPEL

Nancy Lohse

Perched proudly on the corner of Rocklin Road and Front Street is beautiful Old St. Mary's Chapel. Built in 1883 and dedicated as a Catholic church on August 13, 1882, Old St. Mary's is celebrating her 130th birthday this year. Take time to drive by, stop and walk the lovely grounds, and sing Happy Birthday to Rocklin's oldest public building! Saved from demolition in 2005 and lovingly restored, the building continues to make history as brides and grooms walk down the aisle as husband and wife and stop afterward to ring the bell three times celebrating their wedding!

Each wedding at OSM is unique. A recent wedding was held outside on the patio even though I offered the cool interior of the chapel. The couple their first date at a music event on the patio and he took her back there for a surprise proposal. They were determined to complete the story with a wedding on the patio. I did open the front doors so they could continue the tradition of ringing the bell.

Please take time to 'like' us on Face Book so that you can be notified of fun public events happening at Old St. Mary's Chapel.

Call to set up a private tour for your special day!
916-415-1150

www.OldStMarysChapel.com

email: oldstmaryschapel@gmail.com

In Memory of Dorothy Elizabeth Labudde Born Apr. 2, 1924 in Oshkosh, WI. Died July 31, 2013 in Oakland, CA.



Dorothy graduated from the Univ. of Wisconsin and began her career as an English teacher, married Donald Labudde and moved to San Francisco. After retiring as a speech pathologist she was one of the first residents of Stanford Ranch and became a volunteer at the library and Chamber of Commerce and later was a museum docent as well as "Grandma" in the mock wedding video for the Chapel.

A founding member of RHS getting the 501 non profit status, Dorothy served as Secretary, Treasurer and President. She received the Citizen of the Year and Pioneer Ruhkala awards. Dorothy loved to read and loved Rocklin .

She died following a long illness and will be missed by her nieces, nephews and friends.

Carol Peterson

WE NEED YOU

Robert Mart



While financial donations are always welcome, we need help from those of you who have a knack for fixer projects, yes,

you do-it-yourself types.

We're hoping many volunteers will sign up and pitch in to help with some little jobs around the Rocklin History Museum and the Old Saint Mary's Chapel. We need you only for a few hours each month.

Maybe you haven't been asked to help. Well, we're asking now!

Remember that in the past a few have done the work to benefit the many.

Fixer Days started on Tuesday, October 1, and will continue this year on the first and third Tuesdays of each month, and maybesome Saturdays.

Make no mistake, we need your

help. There is an urgency to our request, as many of the little jobs are long overdue!

No worries if you can't

help, volunteer your neighbor.

We're recruiting help from the ladies as well. Please pass the word along.

Please reply to me at 916-435-9360 or e-mail

martslace@sbcglobal.net.

Include your name, phone number, email address and skills or hobbies. Sign up, and help the Rocklin Historical Society preserve Rocklin's rich history.

And thank you to all of you who have already volunteered.



a 20-minute tour of Rocklin's granite history

an encore article from the Quarry Quarterly of January 15, 2007

Gary Day

Note: *This article is unchanged from its original publication in 2007.*

The Rocklin History Museum is open from 1 pm until 4 pm on Wednesday, Saturday and Sunday afternoons. If you are in the mood for Rocklin's history at other times, try this 20 minute tour of two sites which were important to Rocklin's role as the Sacramento Valley's major producer of granite products in the late 19th and early 20th centuries.

Downtown Rocklin is astride high quality and easily accessible granite in a 100+ square mile eroded granite belt that extends from Folsom to Lincoln. The Rocklin area's landscape includes 61 abandoned quarries. Many of these were opened in the 19th century to provide culvert stone and riprap for railroad construction and building blocks for California's monumental buildings such as the State Capitol Building in Sacramento.

Start your tour by driving to the parking lot at the northwest corner of Rocklin Road and Granite Drive. The lake that you see there fills a quarry operated in the early 20th century by the Union Granite Company under the management of Finnish immigrant Matt Ruhkala. Business at Rocklin's granite operations flourished in the 1890s and very early 20th century, but competition from cement-based concrete attenuated the industry's growth after 1905. Nevertheless the Ruhkala quarry continued to produce granite curbing and stone for monuments until at least 1915. Later, Ruhkala operated two other quarries, one of which is now under the westbound lanes of Highway 80.

Next, look from the Ruhkala quarry to the south side of Rocklin Road. Ira Delano's Rocklin Granite Company quarry was located there. Delano's quarry was Rocklin's largest and most financially successful 19th century quarry. Delano was possibly

Rocklin's wealthiest citizen. It was mostly his money that built Rocklin's racetrack in the mid 1890s. In 1915 quarrymen struck the Rocklin quarries for a raise from \$3.25 to \$3.75 per day and closed most of Rocklin's quarries permanently. Delano gave up his business and retired a year later.

Delano's quarry pit served as Rocklin's garbage dump during the mid

financial problems set in after Pernu died in a Yosemite quarry accident in 1929. Four of Ruhkala's sons acquired the quarry in 1933 (Ruhkala had eleven children). They gave it the Ruhkala family's Union Granite Company name, repaired the aging equipment, and produced monument stone, monuments, and crushed stone products here until 1978.

In 1968 Congressman "Bizz" Johnson commended three of the Ruhkala brothers, Ben, Ruben and Abner, for producing 32 granite benches for the United States Capital grounds in Washington D.C. In the early 1970s the Ruhkals imported quartz and crushed it to reinforce the concrete walls of the Transamerica building in San Francisco.

Recent owners gave the quarry the Big Gun name in the early 1990s but they did not extract significant amounts of stone. For countertops and monuments the light grey color of Rocklin's granite cannot compete with the more colorful shades of granite available from elsewhere in California and from overseas. Granite processing operations ceased here in 2005. Today, in 2006, the

latest owner has optioned the quarry to a downtown Rocklin redevelopment company that is proposing to the city to preserve it as the centerpiece of a commercial venture.

Most of the information in this article is from State Geologic Survey records and from Ruben and Roy Ruhkala



Matt Ruhkala's Union Granite Company Quarry now holds the lake that decorates an office building at Rocklin Road and Granite Drive. This quarry produced curbstone and monument stone in the very early 20th century.

20th century and that dump now underpins the parking lot and motel in back of the Taco Bell.

Next, go to the east side of the Rocklin City Office Building at 3970 Rocklin Road and climb to the second floor landing of the exterior stairwell. The stairwell is to the left of the building's entrance. Look south and you will see the sheer granite walls of the Big Gun quarry pit, a spectacular site.

The California Granite company, under the leadership of Finnish immigrant Adolf Pernu, acquired this quarry in the 1890's and modernized its operations with pneumatic, steam and electric equipment in the early 20th century. Quarrying operations here survived the granite industry's early 20th century downturn, but



City Manager Rick Horst described his proposal for the revitalization of downtown Rocklin at the Rocklin Historical Society's September Board meeting. Horst invited board members to comments to his office about the proposal.
Photo Ronna Davis



It was jazz by Karin Defoe and Cherie Miller and their ensemble, small plates by Rubino's Ristorante and magic by Roman Spinale on the patio of the Old Saint Mary's Chapel on September 14.
Photo Ronna Davis



Rocklin Police Chief Ron Lawrence describes his plans for memorializing the two Rocklin police officers killed while performing their duties, Sam Renaldi and Matt Redding, at the Rocklin Historical Society's September Board meeting.
Photo Ronna Davis



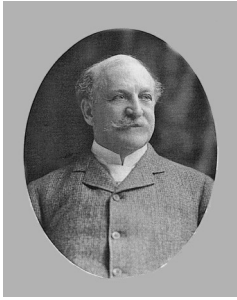
Nancy Ustaszewski (L) and Nancy Lohse draw prize winning tickets at the Rocklin Historical Society's annual Pot Luck in the Community Center at Johnson Springview Park. The event marks the start of monthly historical society meetings which include speakers on a variety of Rocklin history-related topics. The meetings are held in the Old Saint Mary's Chapel at 5251 Front Street at 7 pm on the third Monday of months October through May. Photo Ronna Davis

EBay assistance needed

A genuine work from home opportunity

The board of The Rocklin Historical Society is proposing to raise funds by continuously soliciting donations of used household items and marketing them on Ebay. The plan is to recruit a person to conduct this activity and possibly to compensate them with a percentage of the net proceeds. If you are interested in helping the society to raise funds in this way please contact Neil Davis at:

segmented-
woodturner@gmail.com
cell: [916.616-0923](tel:916.616-0923)



Keeping Up With Joel Parker Whitney

A Study of His Personal Diaries and Writings

Whitney was the largest landowner in northern California, with more than 20,000 acres. He was instrumental in the development of this region in the period 1855-1913.

Bill Marble

One of the multitude of businesses that occupied the life of J. Parker Whitney was growing citrus fruit, and in particular, oranges. On April 16, 1906, J. Parker, his wife Lucy,

turned to the Starr King Office Building that he owned on Geary St. in downtown San Francisco. As it turned out, the building survived the earthquake, but that night it became fully consumed by a fire that began in a theater on the next block and was totally destroyed. The Starr King Building had been a five-story structure that Whitney had upgraded to seven stories in 1902. In all, Whitney had \$545,000 invested in the building and as a result of the fire would lose additional thousands of dollars in office rental fees. He feared that the insurance companies would all go bankrupt

only the power for its own needs, but would also provide electricity to other customers in San Francisco. There was to be a large department store on the first floor and the upper floors would house 300 well-lighted offices for rent. All walls and flooring were covered with ornamental marble.



The Whitney Building

1906 Pope Toledo Touring Car

and son Vincent were in Porterville, CA to check out some orange growing property for possible purchase. Porterville is in central California about 75 miles southeast of Fresno. J. Parker and Vincent spent an enjoyable couple of days inspecting prospective tracts in a brand new Pope Toledo Touring car. They found one tract of 640 acres priced at \$19,000 that looked interesting to them.

However, priorities shifted quite quickly and unexpectedly when, on April 18 at 5:15 AM J. Parker and Lucy were unexpectedly awakened by a "moderate trembling of the Earth." Little did they know that almost 260 miles away, San Francisco was enduring a major earthquake and fire which would become a tragic milestone in the history of the beautiful city.

As soon as J. Parker learned of the severity of the event his sole focus

and he would suffer a total loss. Fortunately, that did not occur. He managed to recoup \$400,000 from his insurance claim and immediately planned to build a new, improved, fireproof Whitney Building. His initial optimism led him to speculate that the new steel-framed, concrete building would be up and operational in ten months. It took much longer and the building did not become occupied until 1909.

The fact that he began work on his new building immediately was an inspiration to the San Francisco community and displayed his optimism that the city would rebound from the tragic events of April 18 and rapidly be even better than before. The new building was eight stories high and constructed of fire-proof materials only. It contained four large elevators and had its own electric power equipment in the basement that would provide not

J. Parker Whitney was justifiably proud of the role he played in getting San Francisco back on its feet and making the new city even better than the old.

Next time: Who the heck is Tom Eastland?

Please consider a gift to the Rocklin Historical Society as part of your year-end tax strategy.

Gary Day

The Rocklin Historical Society operates the Rocklin History Museum at 3895 Rocklin Road to educate visitors concerning Rocklin's role in the cultural and economic development of California. The museum hosts hundreds of adults and about 750 Rocklin School District third graders each year.

The society also operates the Old Saint Mary's Chapel, primarily as a wedding venue. The chapel hosts about 40 weddings each year.

The society is Rocklin's primary advocate for preservation of places and artifacts important to the story of Rocklin's history.

The society is a nonprofit under Tax Code section 501-C-3. Donations to the society are tax deductible in many cases. As you plan your year-end tax strategy please consider a donation to the society so that their work can continue. Please mail a check in any amount to:

**Rocklin Historical Society
P.O. Box 1
Rocklin Ca. 95677**

Rocklin's famous hobo

Gary Day

Finnish immigrant Oskari Tokoi arrived, hobo-style, in Rocklin in 1896 and avoided detection by hiding in a hayloft. He found work in a granite quarry and later opened a quarry of his own. He married Rocklin's prettiest girl and returned with her to Finland to enter politics. He became the first premier of a free Finland when the Bolsheviks granted Finland its independence as they came to power in Russia in 1917.

*(Continued from page 1)
Sam Renaldi*

now if it were not for our honoring their commitment to our community. By memorializing City Marshal Sam Renaldi, we ensure his memory will live on in minds of future generations."

Plans to pay tribute to Renaldi include a special remembrance and wreath-laying ceremony at Renaldi's gravesite in the Rocklin Cemetery on the 100th anniversary of his death – Feb. 19, 2014. Members of the Rocklin Historical Society have been invited to dress in period costumes for the ceremony, which will be open to the public. Following the ceremony, a memorial to Rocklin's two fallen heroes will be unveiled. The unique granite water feature, which will be inscribed with the names of the two officers, will be placed in front of the Rocklin Police headquarters. The day will conclude with the Rocklin Police Department's annual awards dinner for officers, staff and volunteers.

Throughout 2014, Rocklin Police personnel will have the option to purchase and wear a special law enforcement badge commemorating Renaldi. The five-pointed star-shaped badge was designed to replicate the City Marshal's badge. "Marking 100 years of City Marshal Sam Renaldi's death is important as well as a significant milestone," Lawrence concluded. "Failing to honor his memory would be diminishing the sacrifice he made to the citizens of Rocklin. As a police chief, I will not allow that to happen. I find it one of my duties and responsibilities to honor our past just as much as it is to guide the future of the Rocklin Police Department."

Garden Report

Sally Huseby

I am so glad to be enjoying the beginning of fall with cooler weather. Even though we were supposed to be 'off' for the summer, there were some chores we still had to accomplish.

In July we worked at the museum weeding and pruning in preparation for the Heritage Trail Days in August. Near the end of July our great team of volunteers spread bark throughout the flowerbeds for weed abatement as well as making the museum more attractive for our visitors in August. At the beginning of September we were back at the chapel, weeding and pruning vines and trees to keep the flowerbeds looking great for our many upcoming weddings. Some replacement flowers were planted in bridal garden along with the ever-necessary snail bait.

My thanks to all who have worked so hard to keep our gardens looking so beautiful.

Please add items for the Rocklin Historical Society to your shopping list

Gloria Beverage

Help stretch the Rocklin Historical Society's budget by donating items used at the museum and at Old St. Mary's Chapel.

Our ongoing needs include: paper towels, toilet paper, printer paper, Kleenex, garbage bags (large and small), window cleaner, coffee filters, hand soap, paper plates and plastic knives, forks and spoons. We also need a ladder and a vacuum cleaner.

We appreciate your support of the historical society. Donations can be dropped off at the museum during open hours, 1 pm to 4 pm on Wednesday, Saturday or Sunday, or call Gay Morgan at 624-2355.

St. Mary's Rocklin

91 year old S. M. Gomez.

We said our prayers here
We fed our hopes and dreams here
Where we had the holy Eucharist
We comforted each other

Brother to brother, sister to sister
When loss emptied us
We asked the Lord for strength
When weakness came so close

We celebrated milestones
With blessings from this church.

Help us save the quarry We need your letters

Carol Ellis

Recent decisions by the Rocklin City Council allow the State Department of Finance to sell off the most historically important pieces of Big Gun Quarry properties. Please help save this property for posterity by writing a letter of appeal to the State Department of Finance. Please do this as soon as possible.

Address your letter to:

Michael Cohen

**Director , Department of Finance
915 L Street**

Sacramento, CA 95814

**Regarding: Saving Big Gun
Granite Quarry**

In your letter, please state your personal feelings. Tell Mr. Cohen how important that the quarry is to you and your family.

Also, make sure to tell him that the quarry is listed on the National Register of Historic Places and on the California State Register of Historical Places.

Ask him to transfer the property back to the City of Rocklin to be used only for the purpose of historic preservation.

We saved the Rocklin History Museum and The Old St. Mary's Chapel by writing letters and we can save the quarry.

If you have questions, call me at 838-7751.

Mark your calendar

October 21, 2013

**Rocklin Historical Society Monthly Meeting
7 pm, at the Old Saint Mary's Chapel on Front Street**

October 26, 2013, repeated on October 27, 2013

Rocklin History Tour of the Rocklin Cemetery

3 - 5 pm each day

Admission \$10.00

payment and reservations required

Make reservations for either Saturday or Sunday by calling Gay Morgan at 624-2355.

November 18, 2013,

**Rocklin Historical Society Monthly Meeting,
7 pm, at the Old Saint Mary's Chapel on Front Street**

December 7, 2013

Old Town Rocklin Christmas Tree Lighting

4 to 7 pm at the Old Saint Mary's Chapel on Front Street

Free refreshments and photos with Santa.

December 16, 2013,

Rocklin Historical Society Monthly Meeting,

Possibly a Christmas Party

7 pm, Watch your mail for later information.

Also:

Rocklin Historical Society planning meetings are held every Tuesday at 7:30 am in the cafeteria at Oracle, corner of West Stanford Ranch Road and Sunset.

The Holiday Season Starts on December 7 on Front Street



Bring the kids for a fun filled evening with Santa. Enjoy complimentary refreshments and photo's with Santa.

Bring canned food or a new unwrapped toy or coat to contribute to the Rocklin Fire Department or The Placer Food Bank.

Old town Rocklin Tree Lighting

Saturday, December 7, 2013

4 -7 pm

Front Street & Rocklin Road

At The Old St. Mary's Chapel

docents needed

Jean Sippola



The museum needs docents for Oct 26 and 27. and Nov 23. and Dec 15, 22, 28 and 29
If you can volunteer on any of these dates from 1:00-4:00 pm please call me at 652-1034 and let me know.



Rocklin Historical Society
Board of Directors

Dan DeFoe, President
Kathie Nippert, Vice President
Patrice Cardott, Secretary
Russ McNeill, Treasurer
Ronna Davis, Board member
Gloria Beverage, Board member
Jean Sippola, Board member
Sally Huseby, Board member
Gene Johnson, Board member
Nancy Lohse, Board member
Jeff Foltz, Board member
Dr. Jim Carlson, Board member
Skip Gebel, Past President
Roy Ruhkala, President Emeritus

Newsletter Proofreading by Marie Stone

Please send me your email address!

Christy Barros

The Rocklin Historical Society uses email extensively for notifying members of upcoming events. If we don't have your correct email address you are not being so notified.

We use email addresses only for RHS purposes. So if you want to ensure that we have a correct email address for you please send a message to me at:

christy@inetinc.net

Also, RHS is expanding the email address file to include non-members who have an interest in Rocklin's history. If you know of such people please send their email addresses to me or ask them to send me a message and I'll add them to the list.

Rocklin Historical Society, financial position as of September 30, 2013

Russ McNeill, Treasurer

Balance forward August 31, 2013	\$ 45,018
Total Income	\$6,394
Total Expenses	(\$3,770)
BALANCE ON HAND June 30, 2013	\$ 47,642

Mechanics 11 month CD (.45%) (1/13/14)	\$ 30,818.79
Mechanics Bank Chapel Checking	\$ 8,116.32
Mechanics Bank RHS Checking (Uncommitted)	\$ 19,512.25
Committed Funds:	
3rd Grade Transportation Account	\$ 900.00
Children's Firehouse Fund	\$20,503.53
Rocklin Homecoming Reunion	\$2,564.04
Heritage Park Kiosk	\$4,000.00
TOTAL BALANCE IN ALL ACCTS	\$86,577.62
Rocklin Heritage Endowment Fund	\$28,489.23