

## President's Message

Dan DeFoe

As the current captain of the good ship RHS with a crew of talented and dedicated members, together we have charted an adventurous course in the past few months. Now it is time for me (parodying Benjamin



*Rocklin Historical Society President Dan DeFoe is a Sierra College history professor*

Franklin) to write something worth reading about people who have done things worth reading.

Hundreds of Gold Country residents are coming "ashore" at Old St Mary's Chapel which our team of wedding specialists have made into one of the premier wedding destinations in northern California. I'd hand the "You're Fabulous" flags (If any existed) to Nancy Lohse, Patrice Cardott, Skip Gebel, Nancy Ustaszewski, Ronna Davis, Angie Goebel and Martin Corona. Fifty-four weddings on the calendar so far this year with seven reservations already booked for 2015.

The bells ring almost weekly at St Mary's.

In January our crew revived the popular Sunday lecture series with a celebration of Rocklin's sesquicentennial and a commemoration of the historic centennial events of 1914. I felt privileged to share with city officials the tale of the 1914 shootout that saw Marshal Sam Re-

*(Continued on page 2)*

## A taste of history on Front Street

Gloria Beverage

After years of making wine for their own pleasure, the Farinha Brothers have found a way to share their efforts with the public. Commercial winemakers since 2009, Tom and Frank Farinha recently opened a wine tasting room in the historic Barudoni Building on Front Street.

home with 10-acres of land in Wheatland, winemaking became a serious hobby.

Tom turned three acres into a small vineyard. Over time, they planted 23 grape varieties (French, Portuguese, Italian and Spanish) and began to produce a variety of wines.

For the next few years, Tom checked out wine-making classes offered through Sonoma State and began reading the recommended books.

By 2009, the brothers were producing more than enough wines for their families, so they applied for a commercial wine-making license. They selected Cante Ao Vinho, Portuguese for "Sing to Wines," as the name for their winery and joined the Placer Vintners' Association.

Enter Jeff Lindgren, owner of Door Conversions, who had sampled

Cante Ao Vinho wines at Wise Villa in Lincoln. Last fall Lindgren found what he felt was an ideal location to showcase his unique doors, but wanted a winemaker to share the space. "I wanted someone that didn't have a tasting room," he said.

Located across the street from the historic Old St. Mary's Chapel, the granite building was constructed in

*(Continued on page 9)*



*Tom Farinha welcomes visitors to Cante Ao Vinho wine tasting in the Barudoni Building across Front Street from the Old Saint Mary's chapel.*

Winemaking has been a Farinha family tradition for three generations. "Frank and I began making wine together years ago," said Tom Farinha. "Our grandparents made wine and talked our dad into doing it. We took over from them."

The brothers started out making small batches of wine at home with the product they purchased in Lodi. After Tom Farinha and his wife purchased a

## Don't miss this Rocklin History Series presentation at the Old Saint Mary's Chapel on Front Street! Sunday April 13, 2014 at 2 pm

Sierra College Professor Gary Noy will present an illustrated lecture on unusual and lesser-known stories of Sierra Nevada history, with a special focus on local events and personalities. The presentation is based upon material from his book *Sierra Stories: Tales of Dreamers, Schemers, Bigots and Rogues*

(Continued from page 1)  
President

naldi become the first Rocklin police officer to fall in the line of duty. I represented the RHS when I spoke at the commemoration of the beautiful memorial to the fallen Rocklin policemen Renaldi and Matt Redding.

Our Sunday series continues monthly with the next lecture on April 13 by professor Gary Noy discussing his new book, *Sierra Stories: The Hidden History of the Sierra Nevada*. All proceeds go into the fund to rebuild Rocklin's original 1893 firehouse, which will join St. Mary's Chapel in Rocklin's historic Heritage Park on Front Street. Though more fund raising will be needed, we hope to begin groundbreaking this year.

Plans have also gone forward to build an impressive granite kiosk in Heritage Park using, in part, funds donated by the Barbra Chapman family. The display will feature panels on which the history of several of Rocklin's historic sites will be carved in stone.

Much has been accomplished, more work--and fun-- remains ahead.

Please tell your friends and neighbors about us and all we're doing and hope to do. Inspire them with the stories about Rocklin's past, and how the RHS hopes to recapture and preserve and restore our heritage indeed!

Since we began on a silly nautical note let me conclude with a limerick told me once by a real sailor:

*There are good ships and  
wood ships  
And ships that sail the sea.  
But the best ships are friend-  
ships  
And may these always be.*

## The Rocklin History Series continues

Gary Day



Rocklin Historical Society  
President and Sierra College  
History Professor Dan DeFoe

Photo Ronna Davis

2014 is Rocklin's sesquicentennial year. It was 150 years ago in June that the Central Pacific Railroad created a passenger stop here on the route of the Transcontinental Railroad and named it Rocklin.

2014 is also the 100 year anniversary of two of the most notorious events in our city's history. It was 100 years ago in February that Rocklin Marshall Sam Renaldi died in a gunfight with saloon keeper U.S. Holmes. And it was 100 years ago in May that fire destroyed most of Rocklin's business district along Front Street.

In January the Rocklin History Series continued as Rocklin Historical Society President Dan DeFoe detailed these events with a presentation the Old saint Mary's Chapel.

In February the History Series continued with DeFoe's program about the infamous 1877 expulsion of Rocklin's Chinese residents.

The History Series program for March was Father Michael Dillon discussing the history of the society's Old Saint Mary's Chapel. The chapel originated as the Saint Mary's of the Assumption Catholic Church in 1883.

Don't miss the History Series program at 2 pm on April 13 at the Old saint Mary's Chapel. It will be Sierra College History Professor Gary Noy discussing his new book: *Sierra Stories: Tales of Dreamers, Schemers, Bigots and Rogues*

## Celebrate the life of Ruth Ruhkala Williams.

Gay Morgan



This delightful, gracious, soft-spoken lady passed away on February 4, 2014.

She was born August 24<sup>th</sup>, 1917, the fourth daughter and eighth child of Finnish immigrants, Matt and Eva Ruhkala whose children eventually totaled eleven. She grew up in Rocklin and attended Rocklin Grammar School, Roseville High School and the University of California at Berkeley.

In 1939 she married James Williams, a native of Loomis. They had four children and there are now seven

grandchildren and twelve great grandchildren. Her husband preceded her in death.

In later years her hobbies included traveling, golf, bridge and she loved to read. She served as a docent at the Rocklin History Museum and told the touring third graders wonderful stories about growing up in Rocklin.

She lived a wonderful long life and will be missed by all who knew her.

## Rocklin History Series

Our History Our Heritage Our Community

**The series continues in April with Sierra College History Professor Gary Noy and tales from his new book**  
***Sierra Stories: Tales of Dreamers, Schemers, Bigots and Rogues.***

**Gary Noy** will present an illustrated lecture on unusual and lesser-known stories of Sierra Nevada history, with a special focus on local events and personalities. The presentation is based upon material from his book *Sierra Stories: Tales of Dreamers, Schemers, Bigots and Rogues* (Heyday and Sierra College Press, 2014), which will be available for sale and signing. Among many stories, Noy, a Grass Valley native, will recount hidden tales of figures such as Andrew Hallidie, Charles Young, and Adah Isaacs Menken, and other largely unknown stories of adventurers, innovators, artists and scoundrels who have populated the spectacular Range of Light – the Sierra Nevada.



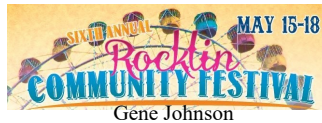
Author, Professor Gary Noy

**Sunday April 13,  
at 2 pm  
at the Old Saint  
Mary's Chapel,  
5251 Front Street  
in historic Down-  
town Rocklin**





## about Old Town Rocklin



## Community Festival parade celebrates Rocklin's 150th birthday

Beginning a tradition, the festivities of the 6th annual Rocklin Community Festival will include a parade on 5th Street. Founding of Rocklin by the Central Pacific Railroad is the parade theme for this year. And, what better reason for celebration than Rocklin's 150th Birthday! The parade is scheduled for 5pm Saturday May 17. It will start at Spring View Elementary School and end at the festival in the Johnson-Springview Park.



We will pull Finn Hall and CP Huntington Train components out of the Johnson "chicken house" for assembly and recycling as 150th birthday floats. We will need assemblers on May 10 or thereabouts. And we will need riders of all ages on parade day. If you can help - Call me at (916) 624-2378.

We need you to help promote the parade. Join in or ask friends and neighbors. parade categories listed to encourage a variety of crea-

tive entries range from walking groups and golf carts to floats. Visit Rocklin Community Festival 2014 [www.facebook.com/rocklincommunityfestival](http://www.facebook.com/rocklincommunityfestival) for festival Information and Parade Entry Applications.

Organizers are also looking for eight old timers, 85 and older, men and women, having significant long time associations with Rocklin or the railroad, to ride along in a horse-drawn carriage as Grand Marshals. If you qualify or know someone who may, please call me at (916) 624-2378

### two anniversaries better than one – founding and incorporation.

Believe it or not, history sells, and communities with significant heritage prior to incorporation typically exploit the earlier date that captures their historic beginnings. The incorporation date has its place in formal city use, police, fire services etc.



Rocklin's founding date (or date of establishment), 1864, embraces the roots of the Rocklin community, the reasons for the community's existence and its early development related to granite mining and railroad heritage of the 1860's. The Rocklin school system originated in 1866.

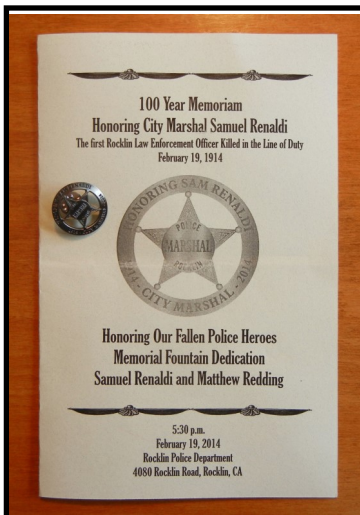
Rocklin's incorporation date, 1893, in turn, recognizes Rocklin's maturing as a political entity, stepping up to address governmental needs of the community including rules of law, utilities, police and fire protection.

Both dates serve their purposes and as worthy excuses for celebration. So lets party!

What to do with those new t-shirts emblazoned "Rocklin Est. 1893".

## Rocklin's fallen heroes remembered

Ronna Davis



A February 19, fountain dedication at Rocklin's Police headquarters honored Marshal Sam Renaldi and officer Matt Redding, the only two Rocklin peace officers to be killed while on duty.

Redding died on traffic duty in 2005, killed by a drunk driver. Renaldi died in 1914 in a gunfight with saloon owner U.S. Holmes. He is remembered as the first Rocklin peace officer to die on duty.

Rocklin Historical Society President Dan DeFoe took the podium to tell the story of the Renaldi/Holmes shootout and several society members dressed in early 20th century costume to mark the shootout's 100th anniversary. See page 11.

## Make history at Old Saint Mary's Chapel

Nancy Lohse  
Photo Martin Corona

Historic Old St. Mary's Chapel sets prominently on Front Street in old Downtown Rocklin. It has been the site of many weddings through the years and continues to serve that purpose to this day. It is also has the honor of being a



place for celebrations of life and memorial services. The chapel is the site of numerous talks on Rocklin history. You can find the current schedule for our Speaker's Series on the Rocklin Historical Society's website as well as on the kiosk located to the right of the chapel. Look

for notices of jazz concerts, too. What a beautiful spot to sit and enjoy great music!

Another important function of Old St. Mary's involves a favorite field trip for Rocklin third graders. Part of third grade social studies curriculum involves the study of local history. In the three years since we have started the tours, hundreds of students and their parents have been introduced to Rocklin's downtown history and well as the history of the chapel. They love hearing how woodpeckers and wind caused the steeple to topple off in 1937. They feel pride in learning that the third grade coin drives helped save the chapel and build the unique granite fountain. What's the favorite part of their tour? Ringing the bell before they get on the school bus and head to the museum, of course!

Take time to visit OSM during these beautiful spring days! The grounds are blooming and beautiful thanks to Sally Huseby and her band of loyal volunteers!

Call to set up a private tour for your special day!

916-415-1150

[www.OldStMarysChapel.com](http://www.OldStMarysChapel.com)

email: [oldstmaryschapel@gmail.com](mailto:oldstmaryschapel@gmail.com)

## donations and collections

Gay Morgan



When the Rocklin History Museum first opened in 2002 people were continually dropping by with pictures and artifacts they thought might be valuable to the museum's collection. This isn't happening as much now.

We are still willing to accept such donations. We can accept them as permanent additions to the museum's collection or on loan. We can also display a collection

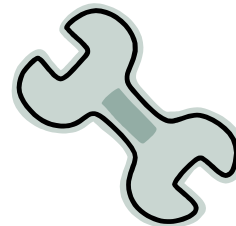
of items for a short time and then return the items to you. For example if you have a collection of historical clothing or toys we would love to put them on display. If you have pictures related to Rocklin history we can copy them and return them to you.

Come by the museum on Wednesday, Saturday, or Sunday from 1-4 or call Gay Morgan at 624-2355 to make an appointment.

## Do you want to join the Fixers?

Bob Mart

I'm very proud of all the little, and some big , jobs the Fixers have completed. I won't list them; just take a walk around Old St. Mary's Chapel or the museum. Let me know if you notice maintenance jobs undone. Sally



Huseby's gang of gardeners are also staying ahead of Mother Nature and keeping the grounds clean and spiffy. We've accomplished a

lot, with a mighty few, and we're not young kids anymore, we're just slow and steady to get the job done.

Yep, looks and feels like spring! Soon it will be too hot for the Fixers to work past noon, which means to keep up, we need more volunteers. We could use some help with plumbing, painting, power washing, sound equipment, and wood refinishing, to name a few of the soon-to-do jobs. If these might be some of your talents, or you simply wish to help and learn a new trick or two in the process, why not join us? Contact me. You've got nothing to lose, well, maybe a new ache or pain, but that's life. For sure, those are overshadowed by the satisfaction you'll have in helping and the fun you'll have with us.

In closing, I must not forget to thank all you volunteers who pitch in when you can.

Bob Mart:

916-435-9360 or

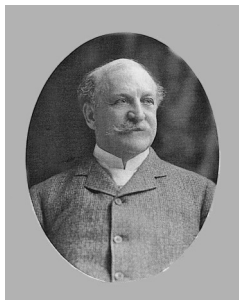
[martsplace@sbcglobal.net](mailto:martsplace@sbcglobal.net)

## docents needed

Jean Sippola

The museum needs docents. If you can volunteer to be a Rocklin History Museum docent please call me at

**652-1034**



## Keeping Up With Joel Parker Whitney (1835—1913)

### A Study of His Personal Diaries and Writings

*Whitney was Northern California's largest landowner. Western Rocklin is astride 12,000 acres of his 20,000 acre Spring Valley Ranch.*

Bill Marble

## Colorado

As soon as the Civil War was over in America, J. Parker Whitney decided to explore investment opportunities in the mineral deposits of Colorado.

He traveled to Colorado on multiple occasions. He got there by train from Boston to the Mississippi River and then used stagecoaches, wagon trains, and horseback to cross

the plains. In Colorado he learned that the easily gathered minerals had been pretty well consumed, but that there was much more to be mined if only there were better processing facilities, more equipment, and more men to make it happen.

He purchased mineral rights to a significant number of mining areas and focused his attentions on the promotional aspects that would be the next step in opening up Colorado for development.

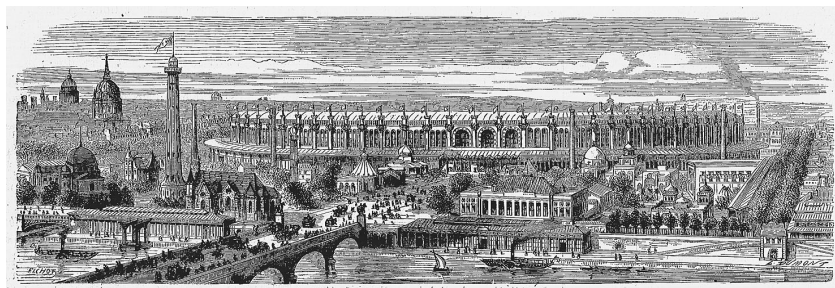
The leaders of Colorado's efforts realized that they needed to assemble an exhibit for the 3<sup>rd</sup> International Exposition to be held in Paris in 1867. Potential investors from all over Europe, as well as other continents, would be there and it was an incredible opportunity to showcase Colorado's resources to men with the money to invest. However, the energy and the money necessary to assemble such an exhibit for Colorado was definitely lacking and J. Par-

ker realized that the only way it would happen was if he spent his own money and his more than ample energy to get it off the ground. At his own cost, he collected 12,000

location in the display hall, hired local labor, and paid them double normal wages to ensure that the Colorado exhibit was completed in time for the rapidly approaching opening of the Exposition.

As a result of his personal efforts, the Colorado Exhibit was awarded the Expo's first Gold Medal.

The medal it was presented to him by the host, Emperor Napoleon III. When J. Parker returned to



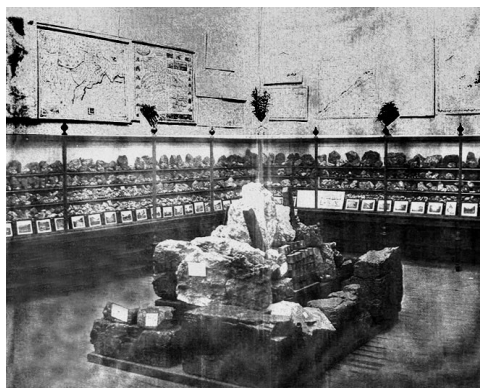
The 3<sup>rd</sup> International Exposition in Paris 1867

lbs. of mineral samples and paid to ship them to Paris. He also wrote, and published in three languages, a

Colorado he was hailed as a conquering hero and was encouraged by both the Republican and Democratic Parties to run for Senator from Colorado. He respectfully declined.

His efforts laid the groundwork for the opening of Colorado to rapid population growth as it became a major producer of minerals.

J. Parker's dealings in Colorado land, and gold and silver mining, greatly increased the size of his personal fortune.



Colorado exhibit at Paris Expo 1867

brochure describing the attributes of Colorado.

When he arrived in Paris, he found that leadership for the whole American exhibit was lagging and he decided to take the bull by the horns. He personally claimed the premium

Next time: *Checking out the oil in Titusville*



## Railtown 1897 State Historic Park,

From the Sierra College Press,

### Snowy Range Reflections Fall 2008.

In association with the Placer-Lake Tahoe Film Office, Beverly Lewis, director



Railtown 1897 State Historic Park is located in Jamestown, Tuolumne County. It is here that reality and fantasy merge. The park is a love letter to the railroad and to Hollywood. The park is only 26-acres, but its cultural range is huge. The location is the roundhouse and shops for the Sierra Railway, a functioning line that has



**The Movie High Noon (1952) used Railtown.**

been in business since 1897. It still supplies lumber companies and delivers rock, gravel and wood chips. The company was instrumental in providing building materials for the string of dams built along the Stanislaus and Tuolumne Rivers

### Part of Hollywood Magic

However, it is not commerce or park standing that makes the railroad famous. It is movie magic. Beginning in 1919, the Sierra Railway has furnished the equipment and location for hundreds of motion pictures, television productions, and commercials. Among the movie productions are "High Noon," "The Virginian," "Bound for Glory," "Duel in the Sun," "Dodge City," "Thomas Edison," "Go West," "The Gambler," "Unforgiven," and

"Back to the Future III."

Television shows such as "Gunsmoke," "Bonanza," and "Little House on the Prairie" all used Railtown extensively.

The yard's most famous steam engine, Locomotive No. 3, even became a TV star in its own right as the Hooterville Cannonball on "Petticoat Junction."

### Still a Repair Facility

The park is dominated by the roundhouse and a fully equipped repair facility still used by the railway. One fascinating stop is the side of one building upon which hangs the identification signs used by motion picture companies on their sets—Dodge City, Coffeetown,



**The TV series "Gunsmoke" utilized Railtown in the 1960s**

and other historic locales are represented. Guided tours inside the roundhouse are conducted most days or you can just wander around the outside of the structures and peer in the open doors. A special attraction is the steam train excursions occasionally offered on weekends. The trip is forty minutes and six miles long. The memories last forever.



**The TV series "Bonanza" utilized Railtown in the 1960s.**



**The Marx Brothers movie Go West used Railtown**



**The TV series "Rawhide" utilized Railtown in the 1950s**

## Priest shares memories of historic church

Gloria Beverage

Corrected and reprinted from the January Quarry Quarterly



Fr. Michael Dillon

When Father Michael Dillon arrived in Rocklin on May 1, 1981, he was welcomed by a community eager to once

again have their own parish.

Rocklin's first Catholic Church was built on Front Street on an oak-framed lot donated by John Bolton, an Irish land developer who made his fortune in the Nevada silver mines.

On Aug. 13, 1883, Archbishop Joseph Alemany traveled from San Francisco to preside over the newly-constructed church's dedication ceremonies.

St. Mary's Catholic Church served the community until 1933 when a declining granite industry and economic downturn resulted in its closure. In 1946, St. Mary's reopened for Sunday Masses as a satellite of St. Rose's Catholic Church in Roseville.

With the arrival of Father Dillon, a new parish was formed to serve Catholics living in Rocklin, Loomis and Penryn.

As Father Dillon quickly discovered, however, his new church had its share of challenges.

On his first day at St. Mary's, Father Dillon presided over a Baptism in the afternoon and then said Mass at 5 p.m.

"It was very hot. There was no air conditioning (in the church) so I opened the door at the back of the church," he recalled. "Just outside the church was a large oak tree where about six horses took shelter."

Unfortunately, the horses also attracted horse flies, which drifted into the building -- buzzing around the interior and annoying the congregation.

"That was the last time I opened

the doors during services," he said.

By the following month, the size of the congregation had outgrown the tiny building so Sunday Masses were moved to the multipurpose room at Parker Whitney Elementary School.

The historic building continued to be used for Baptisms, wedding and funerals. The stairs at the front doorway and the small entry often made it challenging for pall-bearers to bring caskets into the church,



**Saint Mary's of the Assumption Church before it was moved.**

Father Dillon recalled.

As trains whistled through Rocklin, Father Dillon said, services would come to a halt until the train passed and the building stopped trembling.

Cables had been attached to the exterior of the building to help stabilize the aging building.

"Birds built nests in the eaves of the church," he continued. "Quite often they would crawl in between the roof and the walls. I used to have to open windows and doors to release the birds."

Over the next two years, Father Dillon started looking for a suitable site for a new church and the congregation began fundraising.

One Loomis resident, who had a large garden, would sell fresh vegetables after services and donate the proceeds to the building fund. Newspapers were collected by another church member in a very large, ugly drum kept on the side of the church, Father Dillon continued.

In 1983, the congregation gathered for Christmas Eve services in the historic building. The following day, services were held in the new church building -- Sts. Peter and Paul Catholic Church on Granite Drive.

"We took a stone from the granite block foundation and used it as a cornerstone for the new church," he said.

In 1986, the building was sold to the Church of Religious Science, which conducted services there for 10 years. After the church disintegrated, the mortgage holder foreclosed and offered the property to the city.

But the city refused the gift and the property was given to the Baptist church, which sold it in 2001.

When the new owner filed a request to demolish the building, the Rocklin Historical Society got wind of the plans and began negotiations in 2005 to save the historic building. After an agreement was reached, the building was moved 1,000 feet north. Volunteers spent the next two years refurbishing and restoring the building -- making it the centerpiece of Heritage Park at the corner of Front Street and Rocklin Road.

"I was happy that the (Rocklin) Historical Society saved it," he said. "It was really the oldest building in town. They did a beautiful job of restoring it."



(Continued from page 1)

1905 and has housed a variety of businesses ranging from a butcher shop to a feed store and an antique shop.

Lindgren approached Tom Farinha and shared his vision for the main floor of the historic building. He wanted to create an inviting space for a tasting room as well as a place to display local art. "You can't help but fall in love with this building," Farinha said.

To blend with the historic ambiance, Farinha designed and built a 30-foot bar using weathered wood from an old barn and edging it with mahogany. He added coat hooks to the front of the bar so female customers would have a place to hang their purses. An antique buffet, tables, a couch and chairs as well as a large-screen TV invite wine lovers to sit and sip.



While several of Lindgren's unique doors are on display in the tasting room, he wants to showcase the works of local artists. Currently, iron sculptures by noted artist Phill Evans are featured.

Farinha is happy to have a friendly place to serve his wines. "My favorite wine is the one people buy," he said. "I like all of them, although some get better as they age."

Currently, the tasting room is only open Saturdays and Sundays from 11 a.m. to 5 p.m.

## Landscape Plant Sale

Kathie Nippert



The wonderful volunteers who keep the Chapel and Museum grounds in tip top shape are having a Spring Plant Sale at St Mary's Chapel on Front Street on Saturday April 12th beginning at 8:00 AM. Proceeds will go to the construction of a replica of Fire Hose Company No1. Please stop by and check out our selection, something just might catch your eye! Contact Kathie Nippert at [916-630-9073](tel:916-630-9073) with questions

## Please send me your email address!

Christy Barros

The Rocklin Historical Society uses email extensively for notifying members of upcoming events. If we don't have your correct email address you are not being so notified. We use email addresses only for RHS purposes. So if you want to ensure that we have a correct email address for you please send a message to me at: [christy@inetinc.net](mailto:christy@inetinc.net)

Also, RHS is expanding the email address file to include non-members who have an interest in Rocklin's history. If you know of such people please send their email addresses to me or ask them to send me a message and I'll add them to the list.

## Celebrate the life of Margie Younger.

Gay Morgan



This charming, vivacious, smiling lady passed away on March 19<sup>th</sup>.

She was born June 10, 1921 in Bay City Michigan. She attended local schools there and went to Ohio State University. She married Jack Younger in 1942.

After the war they lived in various places in the Bay Area. They moved to Rocklin in 1989 and became very involved in the community and its service clubs. They jointly wrote columns for The Placer Herald and The Roseville Press Tribune. Mr. Younger passed away in 2001.

Margie continued writing about and photographing local events. She remained active in many clubs and served as President of the Whitney Ranch Women's Club from 1991-1993.

A son and daughter, three granddaughters, and a great grandson survive her. Her many friends will miss her.

RANDY PETERS  
CATERING & EVENTS  
PLAN . PARTY . REPEAT .

## EBay assistance needed

A genuine work from home opportunity

The board of The Rocklin Historical Society is proposing to raise funds by continuously soliciting donations of used household items and marketing them on Ebay. The



plan is to recruit a person to conduct this activity and possibly to compensate them with a percentage of the net proceeds. If you are interested in helping the society to raise funds in this way please contact Neil Davis at:

segmented-  
woodturner@gmail.com  
cell: 916.616-0923

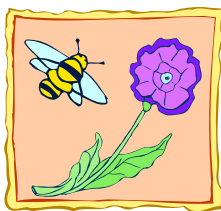
## Garden Report

Sally Huseby

It's that time of year. When we go outside on a spring day we enjoy the greening trees and the beautiful blooming flowers.

The wonderful group of garden volunteers has planted, pruned and weeded the gardens surrounding St.

Mary's Chapel to keep it looking attractive for the many weddings and other activities held there during



the year.

Volunteers have also saved an old rose bush from a property and are calling it the Quarry Rose.

It has been replanted at the rear of the museum and we look forward to its new growth as we continue to preserve Rocklin's history in its many forms.

## Please donate your old stuff for the annual RHS Yard Sale

Kathie Nippert

How's your New Years resolution to lose weight going? Donate those too big clothes to our June yard sale.

Are you an empty nester and your kids left all their stuff in your garage? We would love to take it off your hands!

Whether you are cleaning out closets, redecorating or are tired of looking at Aunt Mabel's oil painting, we can turn you gently used items into cash to help reconstruct the Hose Company Number One Firehouse building Front Street. Your donations are often tax deductible

Please contact Gene Johnson to pick up your items at (916)624-2378.

Volunteers are needed to set up, price and bag up purchase. Consider volunteering for a great cause.



Brothers Tom and Frank Farinha recently opened Cante Ao Vinho wine tasting in the granite Barudoni Building across the street from the Old Saint Mary's chapel on Front Street. (See page 1.)

The brothers have invited the Rocklin Historical Society to host Rocklin History Series attendees for post event refreshments. Pictured is the refreshment table for the March 16, Fr. Dillon event. Ronna Davis executed the table and photographed it.

## Help preserve Rocklin's history and support history-related arts projects.



## The Rocklin Heritage Fund at the Placer Community Foundation supports the Rocklin Historical Society

Now it is possible to make tax-deductible gifts and perpetual endowments that will support Rocklin Historical Society programs including both visual and performing arts related to Rocklin's heritage.

Please contact Veronica Blake at 530-885-4920 to learn how you can contribute, or go to [www.placercf.org](http://www.placercf.org).



Local giving. Lasting value.

## Know Your Docents introducing Jerry Farren

Gay Morgan



Jerry is one of our newest Rocklin History Museum docents. He originally came to the museum to research some old pictures in connection with his new found hobby, sculpting from clay to bronze. He wants to make sure the figures he sculpts are historically correct in every detail. One of his very first pieces is titled "On Time". It is beautifully detailed figure of an old-fashioned railroad conductor with a watch and a lantern. The Rocklin Friends of the Library purchased one and it is on display at the Rocklin Branch of the Placer County Library at the corner of Rocklin Road and Granite Drive. We also have a copy on loan at the Rocklin History Museum.

Growing up in Santa Barbara gave Jerry the opportunity to develop his

love of art and history in his many visits to the Museums there.

He attended California Polytechnic State University and graduated with a Bachelor of Science degree in Education. He retired from teaching in the Loomis Union School District where he taught fifth grade.

The Farrens, Jerry and Joann have lived in Rocklin for 41 years. They raised their four children here. They are also the proud grandparents of four. Joann still works for the Rocklin Unified School District and told Jerry he needed something to do in his retirement. He found that something in the art of sculpting combined with his love of history. Jerry loves to talk about history too and became a Museum docent and helps with the tours given to third graders.

At some point in time, when the scheduling works out, the Rocklin Historical Society is planning to sponsor a show of Jerry's work which includes "On Time", "The Marshall", "Maidu Dancer" and sculptures of two Rocklin Police Officers who lost their lives in line of duty, Sam Renaldi and Matt Redding.

We are pleased to have this talented artist as an involved member of the Rocklin Historical Society.

## in costume for the Feb. 19, Redding/Renaldi memorial

Photo Ronna Davis

### another occupant for the pyramid

The Whitney family's Pyramid tomb is within a one-acre fenced enclosure near the 11<sup>th</sup> green on the Whitney Oaks Golf Course. Joel Parker Whitney's descendants picnic on the grass near the tomb on the first Sunday of each May. About once every five years they open the tomb for new interments. This year they will be interring the cremation of Allan Whitney, one of Joel Parker Whitney's great grandsons who died recently at age 84.

## Patrice Cardott (left)



Nancy Lohse  
Carol Ellis, (front)  
Nancy Ustaszewski  
Gay Morgan  
Ronna Davis

See page 4.

## History Tours

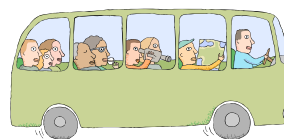
Gay Morgan

We have been conducting Rocklin History tours and have third-grade tours scheduled for eight of the eleven elementary schools in the Rocklin Unified School District.

Thanks to a donation from Rocklin Kiwanis Club we have been able to assist schools with the cost of bus transportation.

Tours start with a stop at the Old St. Mary's Chapel, Rocklin's oldest public building where Nancy Lohse

tells  
the  
children  
about  
its  
histo-



ry. Third grade coin drives provided a large part of the funds that restored the building. The high point of the children's visit is when they get to ring the chapel bell.

The children then come to the Museum where a group of volunteers tell them about the history of Rocklin and discuss the museum displays. The popular part of museum tour is the laundry room with many hands-on activities.

Usually the children also go to the City Hall and the City Hall Park.

When they return to school the children participate in an essay contest, writing about what they learned on their history trip.

Rocklin's third-graders are conducting a coin drive to help build a replica of Rocklin's original Firehouse/City Hall.

Recently we also gave tours to three Cub Scout groups and several adult groups.

Volunteers who guide these tours are: Susan Brooking, Leslie and Russ McNeill, Patrice Cardott, Diane Wade, Nancy Ustaszewski, Bob Mart, Jerry Farren, Kathy Reed, Pat Woessner and Gay Morgan.

Appointments for tours for 10 or more can be made by calling Gay Morgan at 624-2355.





### **Rocklin Historical Society Board of Directors**

**Dan DeFoe, President**  
**Kathie Nippert, Vice President**  
**Patrice Cardott, Secretary**  
**Russ McNeill, Treasurer**  
**Ronna Davis, Board member**  
**Jean Sippola, Board member**  
**Sally Huseby, Board member**  
**Gene Johnson, Board member**  
**Nancy Lohse, Board member**  
**Jeff Foltz, Board member**  
**Dr. Jim Carlson, Board member**  
**Skip Gebel, Past President**  
**Roy Ruhkala, President Emeritus**

### **Save the date**

Gay Morgan

The Rocklin Homecoming Reunion Luncheon will be on May 25<sup>th</sup> at the Finn Hall from 11:00 a.m. to 2:00 p.m. Anyone who has ever lived in or is living in Rocklin is welcome. Guests are welcome too. This event is a tradition, which began many years ago. After friends and relatives decorated graves on



Memorial Day, they were invited to the home of Ernest and Mayme Willard for cake and coffee. Later Roy and Peggy Ruhkala became the hosts until it

became too large for a family home. Now it is held annually at Finn Hall on the Sunday of Memorial Day Weekend.

This is a chance to greet returning friends and to meet and welcome some newcomers.

A catered lunch will be served. There is no charge but donations are certainly appreciated. Hope to see all of you there.

## **Mark your calendar**

### **April 12, 2014**

#### **Spring Plant Sale**

**8:00 AM. at St Mary's Chapel on Front Street**

See Page 9. Proceeds will go to the reconstruction of Rocklin's original firehouse.

### **April 13, 2014**

#### **The Rocklin History Series Continues.**

**2 pm at the Old Saint Mary's Chapel on Front Street**

Sierra College Professor Gary Noy will present an illustrated lecture on unusual and lesser-known stories of Sierra Nevada history, with a special focus on local events and personalities. The presentation is based upon his book *Sierra Stories: Tales of Dreamers, Schemers, Bigots and Rogues*.

See page 3

### **April 28, 2014**

#### **Springfield History Club monthly meeting**

**1 pm at the Springfield Gables**

**Free admission**

**Bill Marble, The Whitney Saga**

For access to the Springfield Gables dial 631 at the Springfield gate then hit the "Call" key and the gate will open.

### **May 25, 2014**

#### **Rocklin Homecoming Reunion**

**11 am at Finn Hall**

A reunion for anyone who has ever lived in or is living in Rocklin. Guests are welcome too.

### **May 26, 2014**

#### **Springfield History Club monthly meeting**

**1 pm at the Springfield Gables**

**Free admission**

**Jack McInturff, Surprising Facts of Top Nazis**

For access to the Springfield Gables dial 631 at the Springfield gate then hit the "Call" key and the gate will open.

### **June 21, 2014**

#### **RHS Annual Yard Sale**

See page 10. Save your stuff, more information in early June.

### **June 22, 2014**

**Karin DeFoe in concert at Old Saint Mary's Chapel on Front Street**

More information in June.

### **June 23, 2014**

#### **Springfield History Club monthly meeting**

**1 pm at the Springfield Gables**

**Free admission**

**Heide Frantz, The Maidu Indians**

For access to the Springfield Gables dial 631 at the Springfield gate then hit the "Call" key and the gate will open.

### **Also:**

Rocklin Historical Society board meetings are held on the second Monday of every month at 6 pm in the Old Saint Mary's Chapel annex. If you have comments or questions for the board of your historical society this is your chance.

and  
 Rocklin Historical Society planning meetings are held every Tuesday at 7:30 am in the cafeteria at Oracle, corner of West Stanford Ranch Road and Sunset.